

BUILDING  
COMMON GROUND



# Product & Service Overview

Max Frank Ltd.

Edition United  
Kingdom

[www.maxfrank.com](http://www.maxfrank.com)





# BUILDING COMMON GROUND

Individual project solutions and products of the MAX FRANK Group are in demand internationally and can be found in the most diverse types of structure, such as high-rise buildings, bridges, tunnels or infrastructures. Since its foundation MAX FRANK has developed into an integrated building technology supplier. We support our customers through every building phase with a technically sophisticated and intensive intermeshing of industrial production, high-quality products and multifaceted services. Added value is generated for our partners through know-how that has grown over the course of half a century, the large number of proven products for concrete and reinforced concrete construction and the technological bandwidth of our business units - spacers, formwork technology, reinforcement technology, sealing technology and building acoustics. It creates components with new functions and greater economy of the work processes on site.

Through its pronounced sense of value and its trustworthy integrity, MAX FRANK knows how to bridge chasms and to win over the different parties for a common agenda. We are assisted in this by our ability to listen attentively and to ask the right questions. Questions that penetrate to the core of the task and help to gain new insights and stake off more and more common terrain.

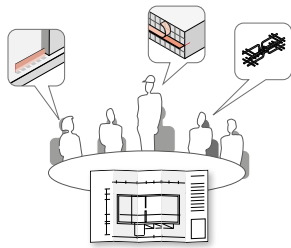
**We at MAX FRANK call that:**

**BUILDING COMMON GROUND**

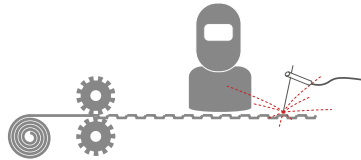
[www.maxfrank.com](http://www.maxfrank.com)

# INDIVIDUAL VARIETY

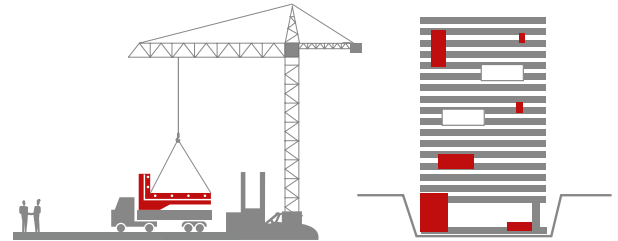
Products from MAX FRANK are technically sophisticated, requiring intensive explanation and advice – but above all they are versatile in use. Our service is versatile and precisely for that reason very personal.



PLANNING



PRODUCTION



BUILDING SITE



## OUR STRENGTHS

A wide range of products, high-quality product combinations, project solutions, intermeshing of planning, production and sales



## CUSTOMER BENEFITS

Saving of costs and time, solution from a single reliable source



## THE COMMON APPROACH

Sustainable and safe reinforced concrete structures

# UNBEATABLE CUSTOMER SERVICE

At MAX FRANK, we recognise the importance of comprehensive customer support and we pride ourselves on the friendliness and knowledge of our staff. We are here to help with any queries, and to ensure your orders are processed efficiently and delivered to meet your onsite timetables.

## PROBLEM SOLVED!

- Reinforced structures
- Groundworks
- Concrete durability
- Architectural finishes
- Waterproofing

## ADVANCED DESIGN & DETAILING

MAX FRANK's technical design & take-off service enables us to accurately estimate project costs and speedily provide quotations. In addition to this service, we also provide a design software suite to clients who prefer to produce their own calculations and layouts.





# CONTENTS



**Spacers**

page 7



**Formwork  
Technologies**

page 11



**Reinforcement  
Technologies**

page 25



**Sealing  
Technologies**

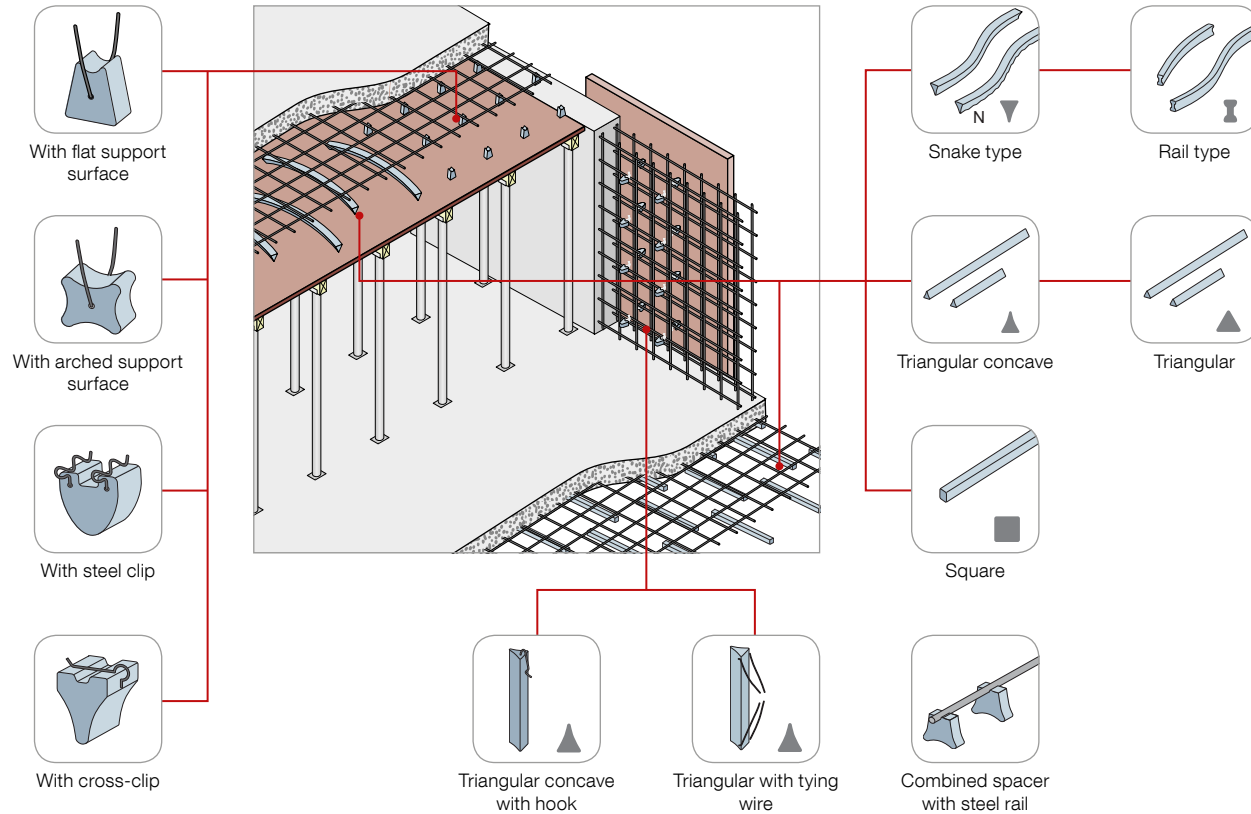
page 35

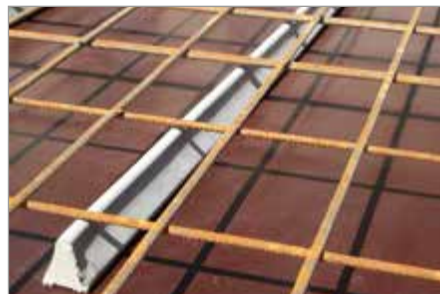
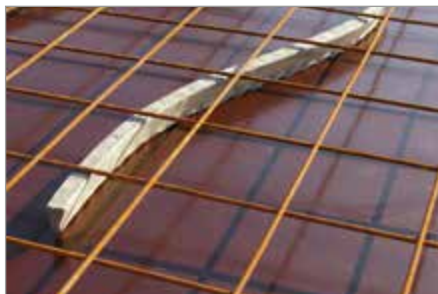
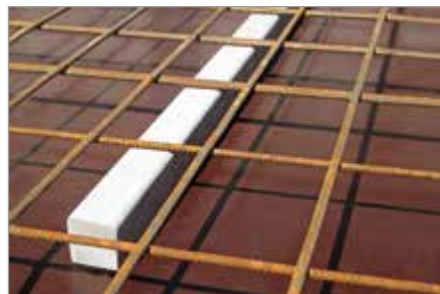


**Building Acoustics**

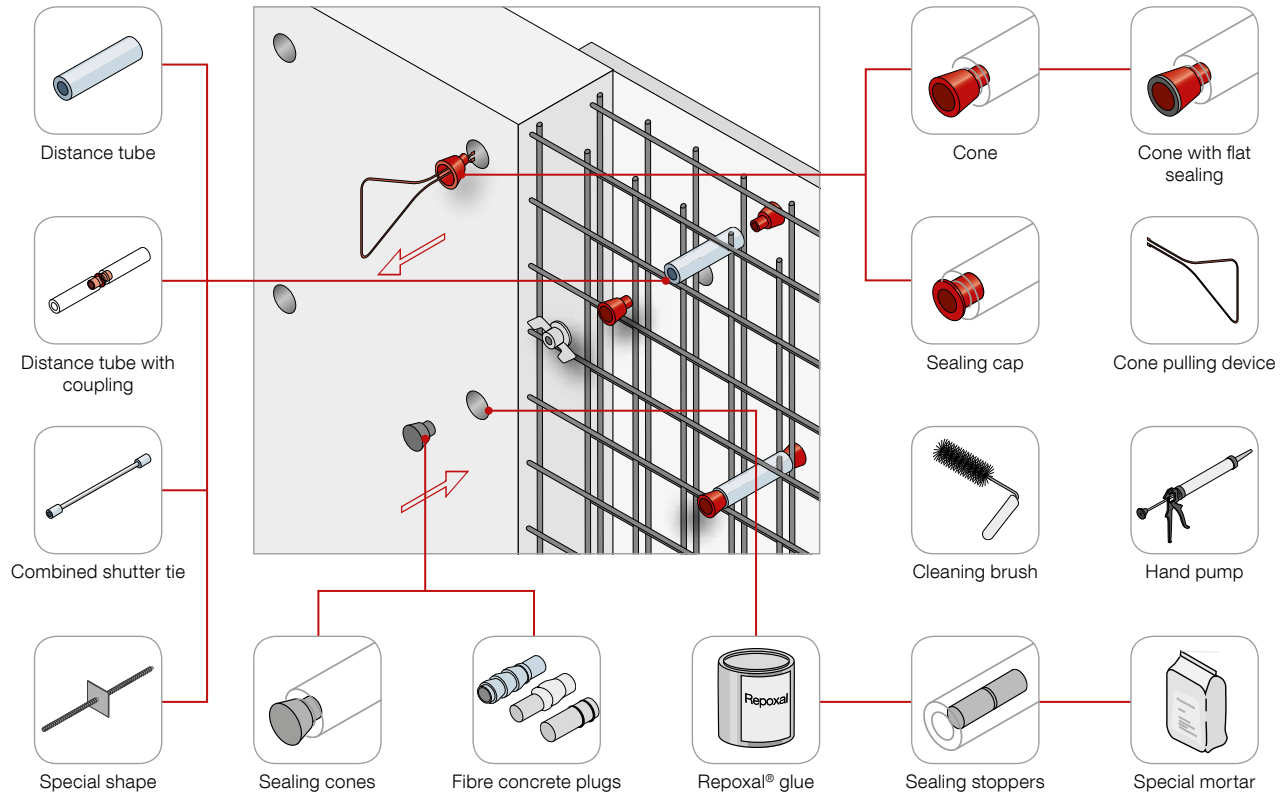
page 45

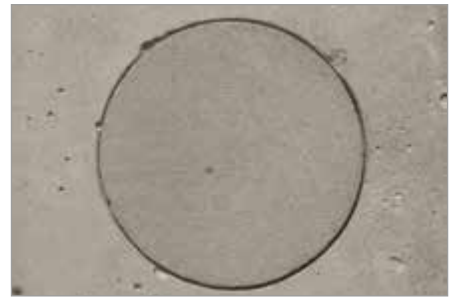
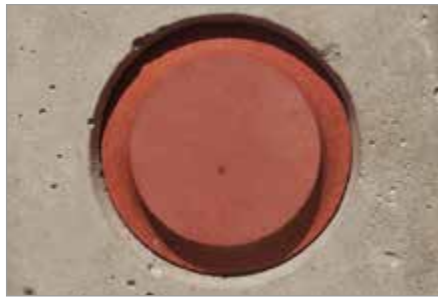
# Fibre concrete spacers



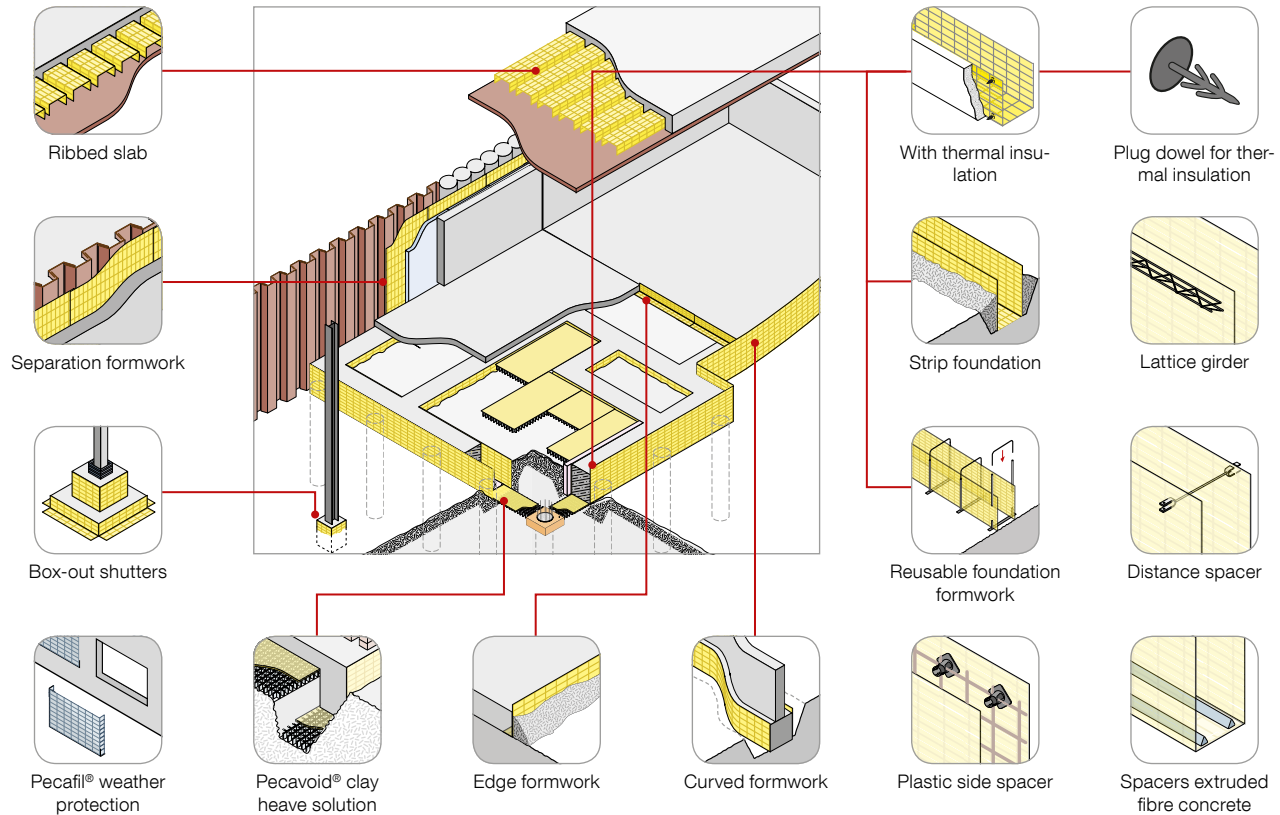


# Fibre concrete distance tubes

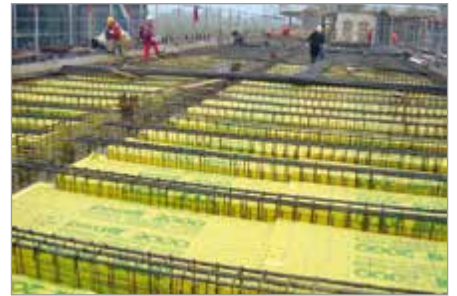
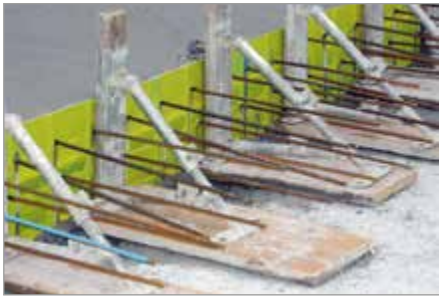
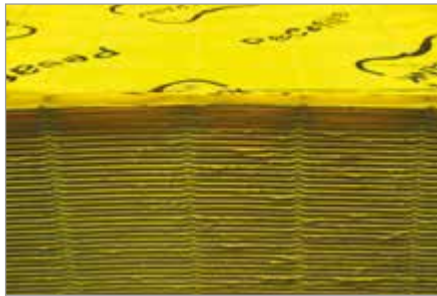




# Pecafil® permanent formwork

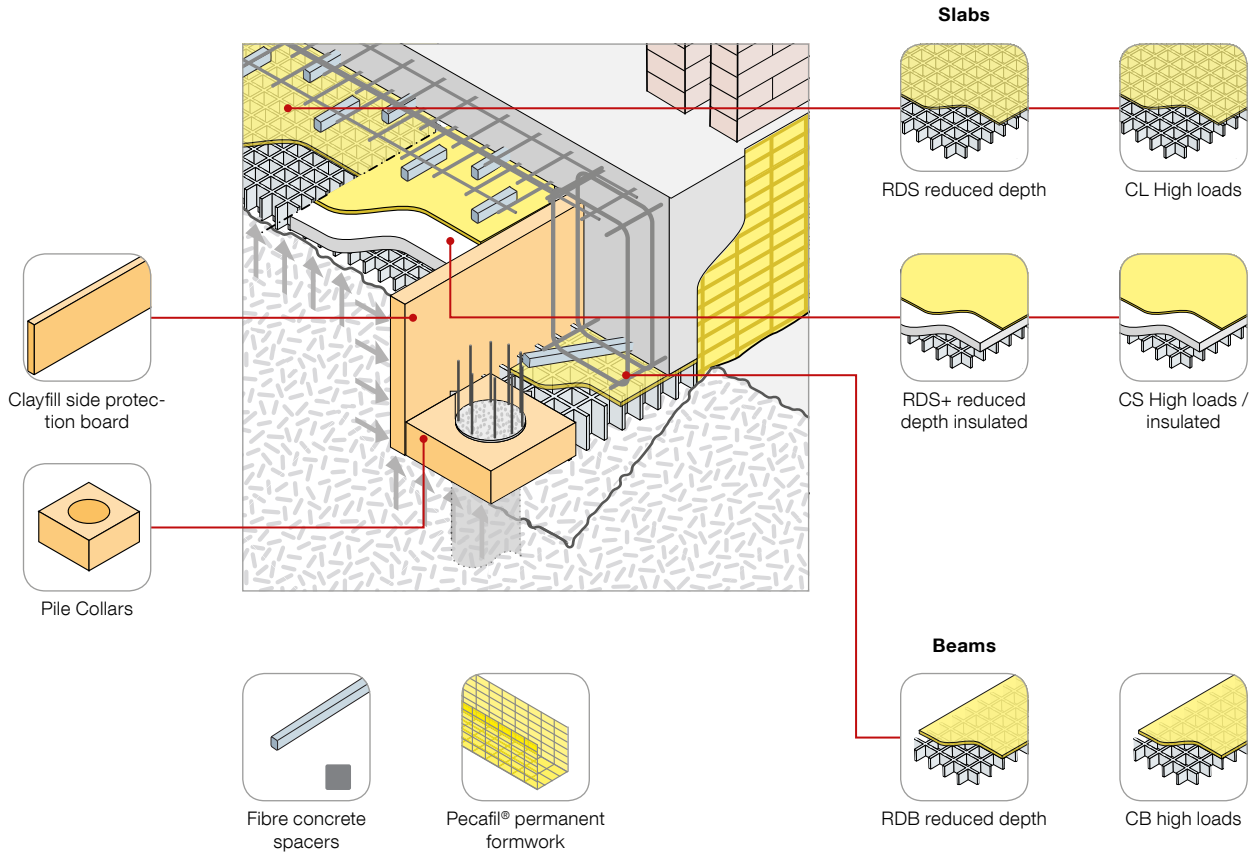


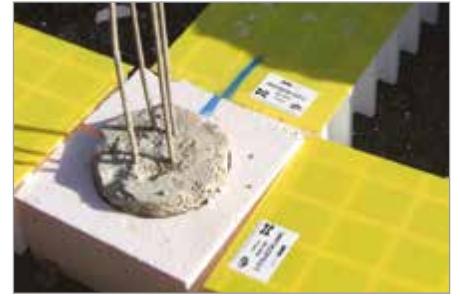




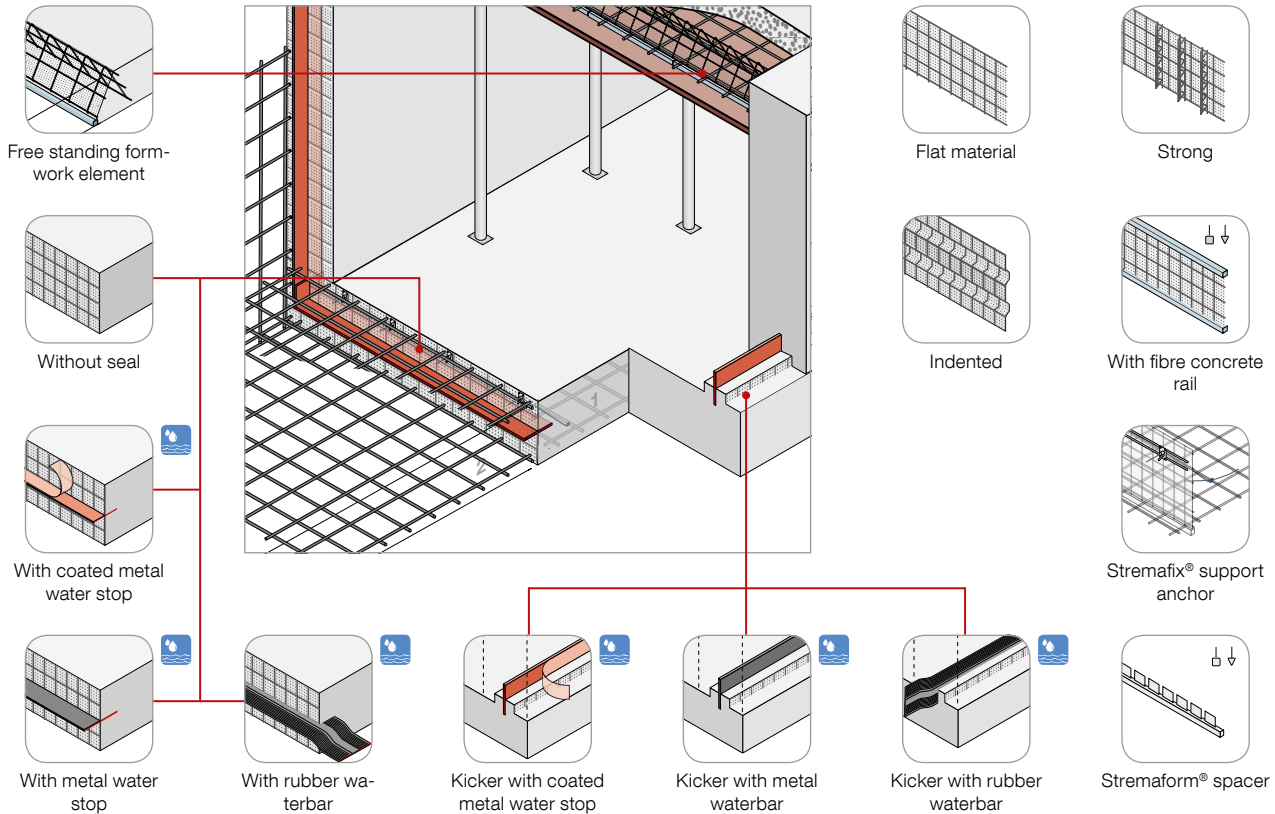


# Pecavoid® ground heave solution





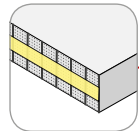
# Stremaform® formwork elements for working joints



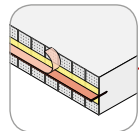


# Stremaform® formwork elements for controlled crack joints

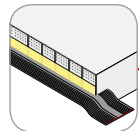
Formwork element for controlled crack joints



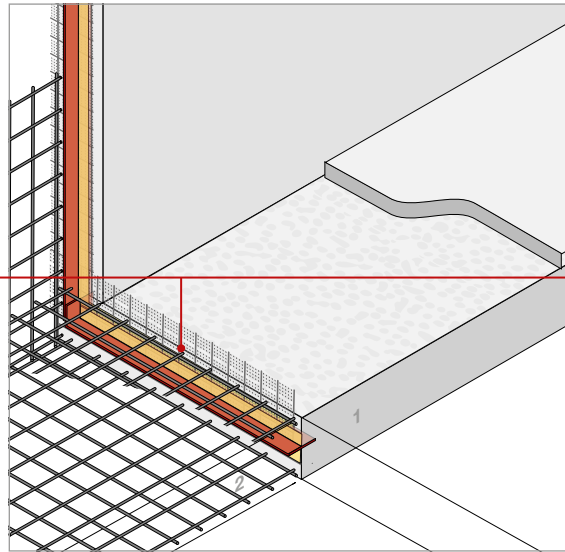
Without seal



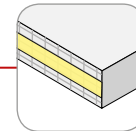
With coated metal water stop



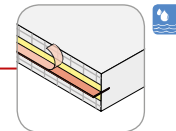
With rubber waterbar



Controlled crack joint formwork element



Without seal



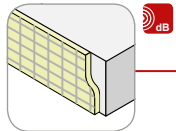
With coated metal water stop



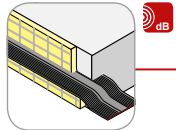


# Stremaform® formwork elements for expansion joints

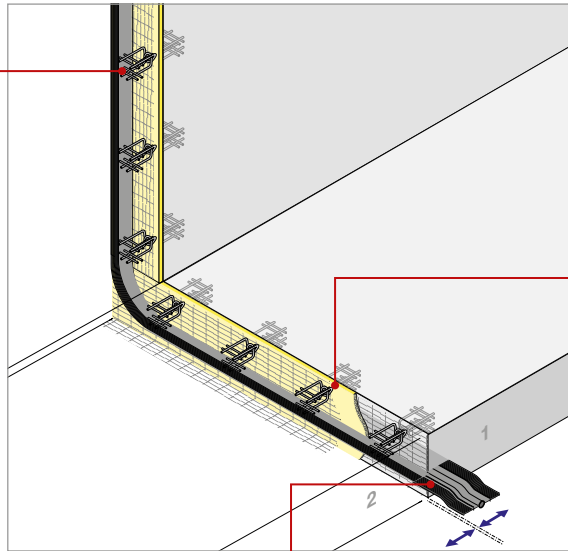
## Sound joint



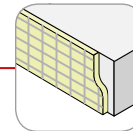
Sound joint



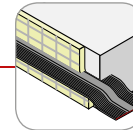
With rubber waterbar



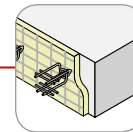
## Expansion joint



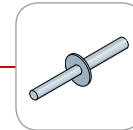
Without seal



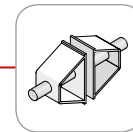
With rubber waterbar



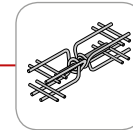
With shear force transmission



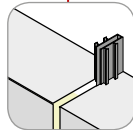
With Egcodubel transverse force dowel



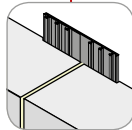
With Egcodorm® DND dowel for dynamic loads



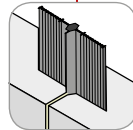
with Egcodorm®



with u-bar waterbar

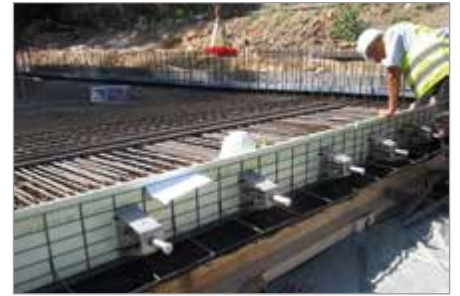


with rear waterbar

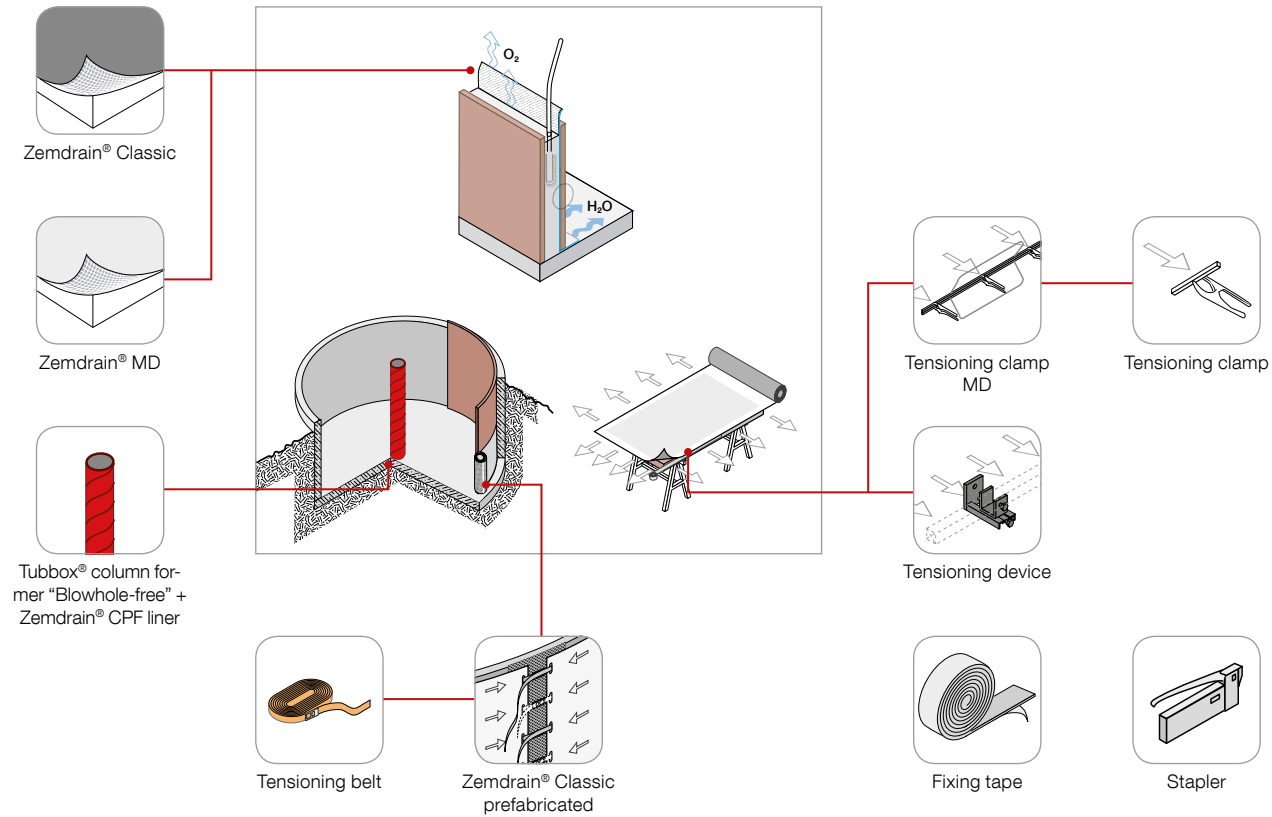


with integrated waterbar cage





# Zemdrain® CPF liner





## Insitex® patterned PVC formwork liners

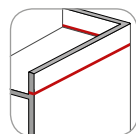




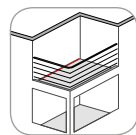
## NOEplast patterned rubber formwork liners



## Egobox® thermal break balcony connector



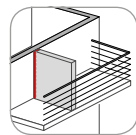
Parapet wall



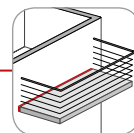
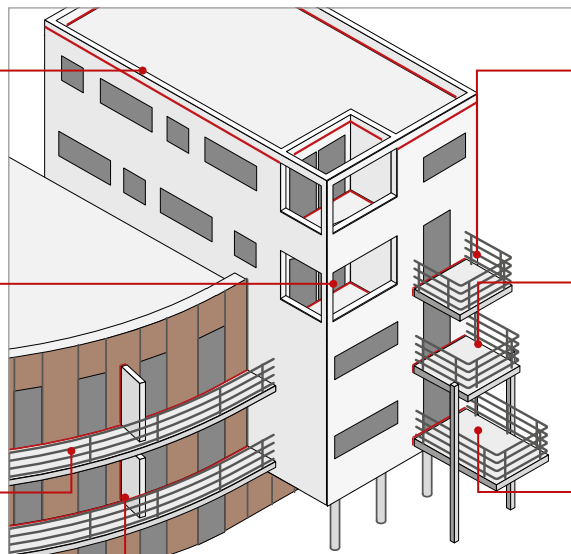
Loggia slab



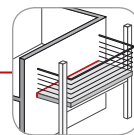
Special elements



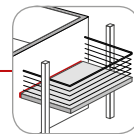
Cantilevered wall



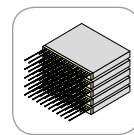
Cantilevered balcony



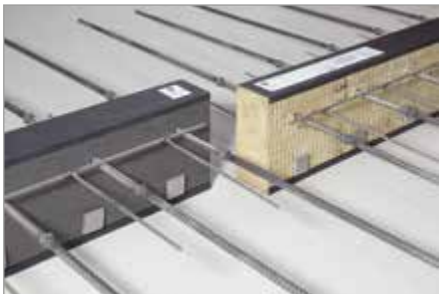
Supported slab



Supported cantilevered slab

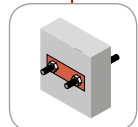
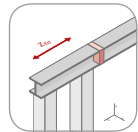


Pre-fabricated parts

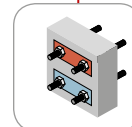
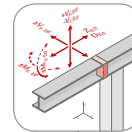
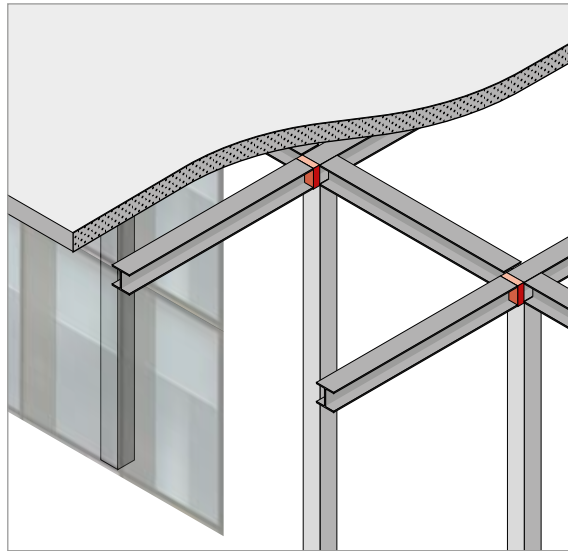




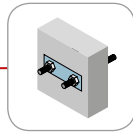
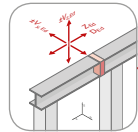
# Egobox® FST steel thermal break connector



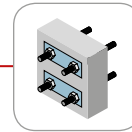
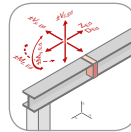
For tensile force stresses



For torques, normal and shear force stresses



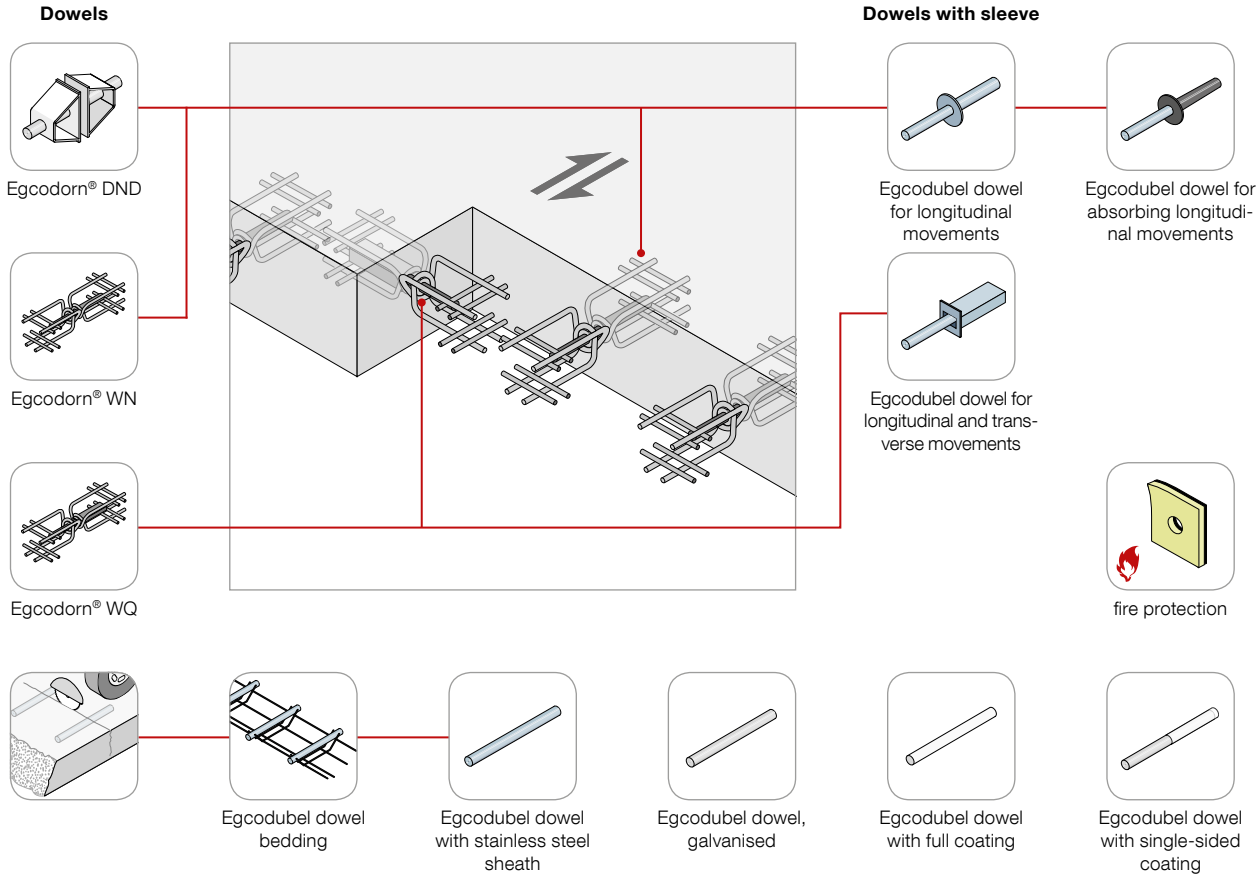
For normal and shear force stresses

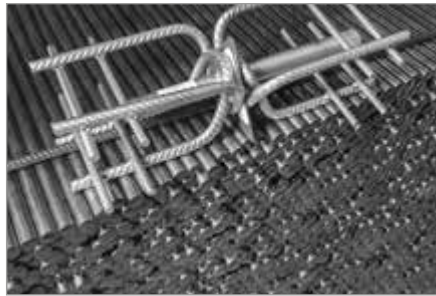
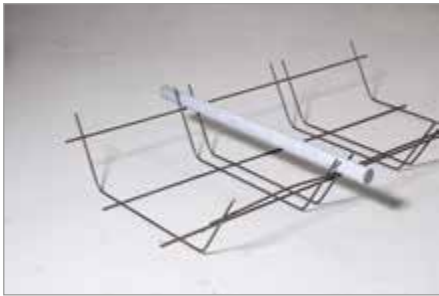
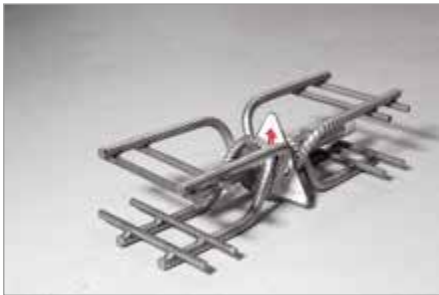


For alternating torques, normal and shear force stresses



# Egcodorn® shear force dowel





# Shearail® punching shear reinforcement

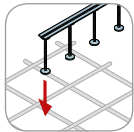
## Layout



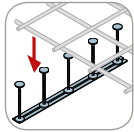
Radial layout pattern



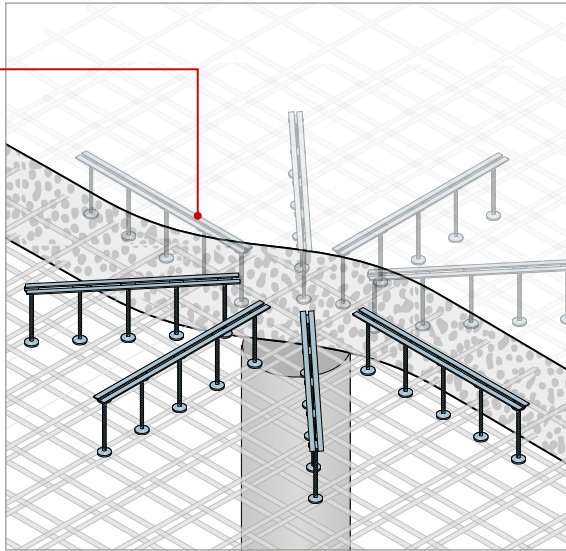
Orthogonal layout pattern



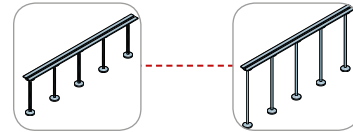
Top down fixing



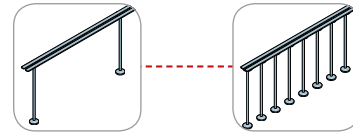
Bottom-up fixing



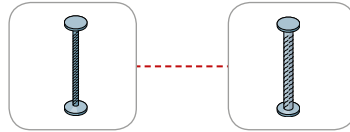
## Stud heights variable



## Number of studs per rail variable



## Stud diameters



Ø 10, 12, 14, 16, 20, 25 mm

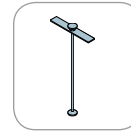
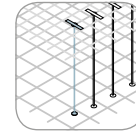


Plate solution



Headed bar



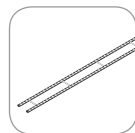


# Brick-Track® masonry reinforcement

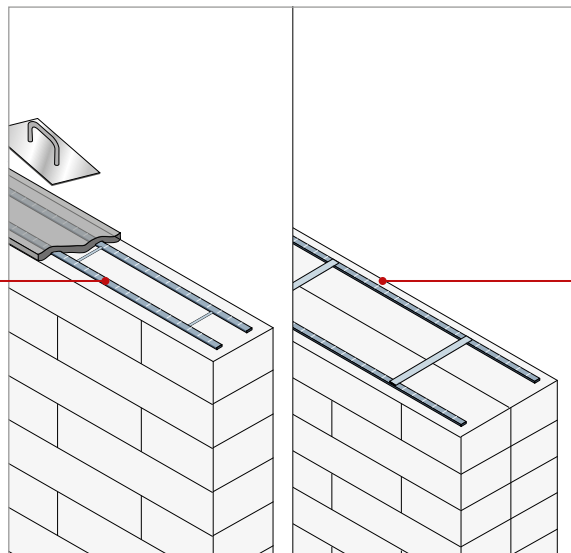
## Brick-Track®



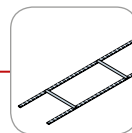
Stainless steel



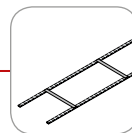
Galvanised steel



## Brick-Track® CJ for Collar Jointed Masonry

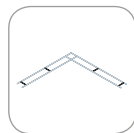


Stainless steel



Galvanised steel

## Prefabricated components



Corner

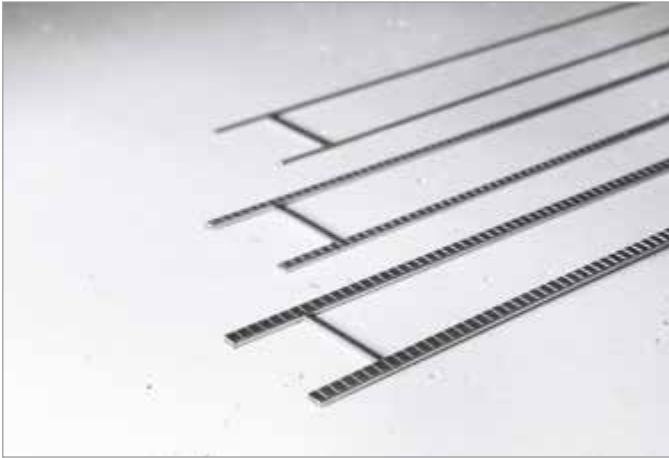


T

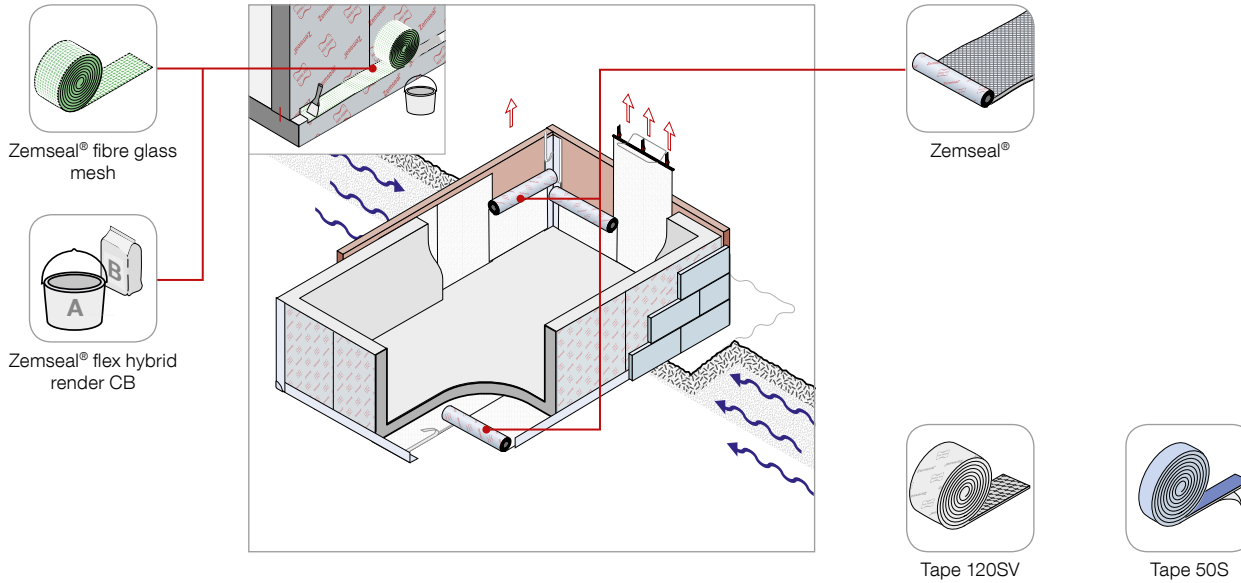


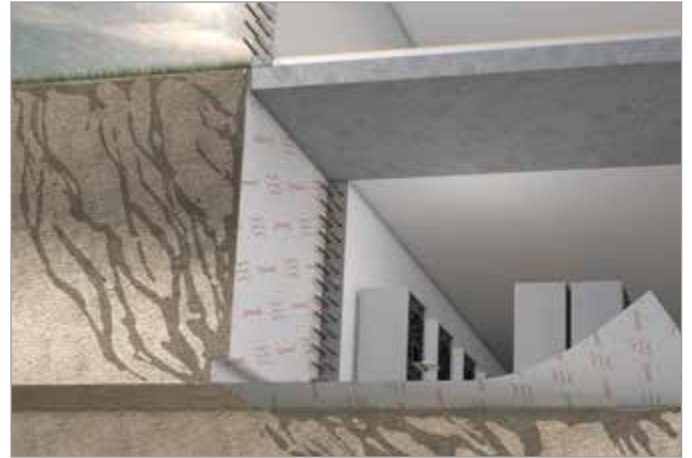
Curved





# Zemseal® sub-structure waterproofing system

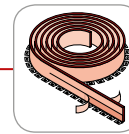
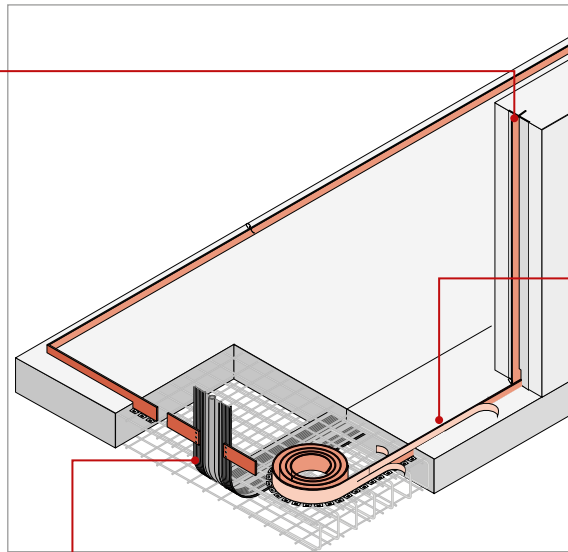




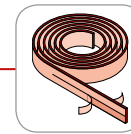
# Fradiflex® metal water stop for in-situ concrete



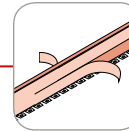
Controlled crack component



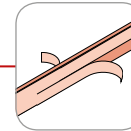
Fradiflex® Premium, rolls



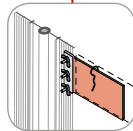
Fradiflex® Premium, rolls



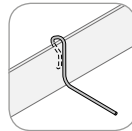
Fradiflex® Premium, straight



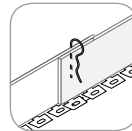
Fradiflex® Premium, straight



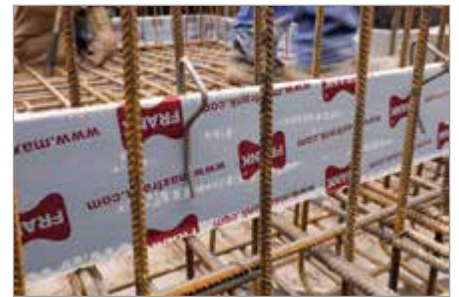
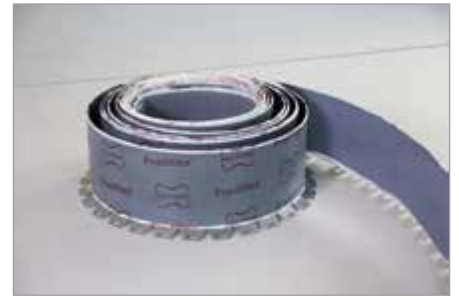
Expansion joint connection



Assembly bracket

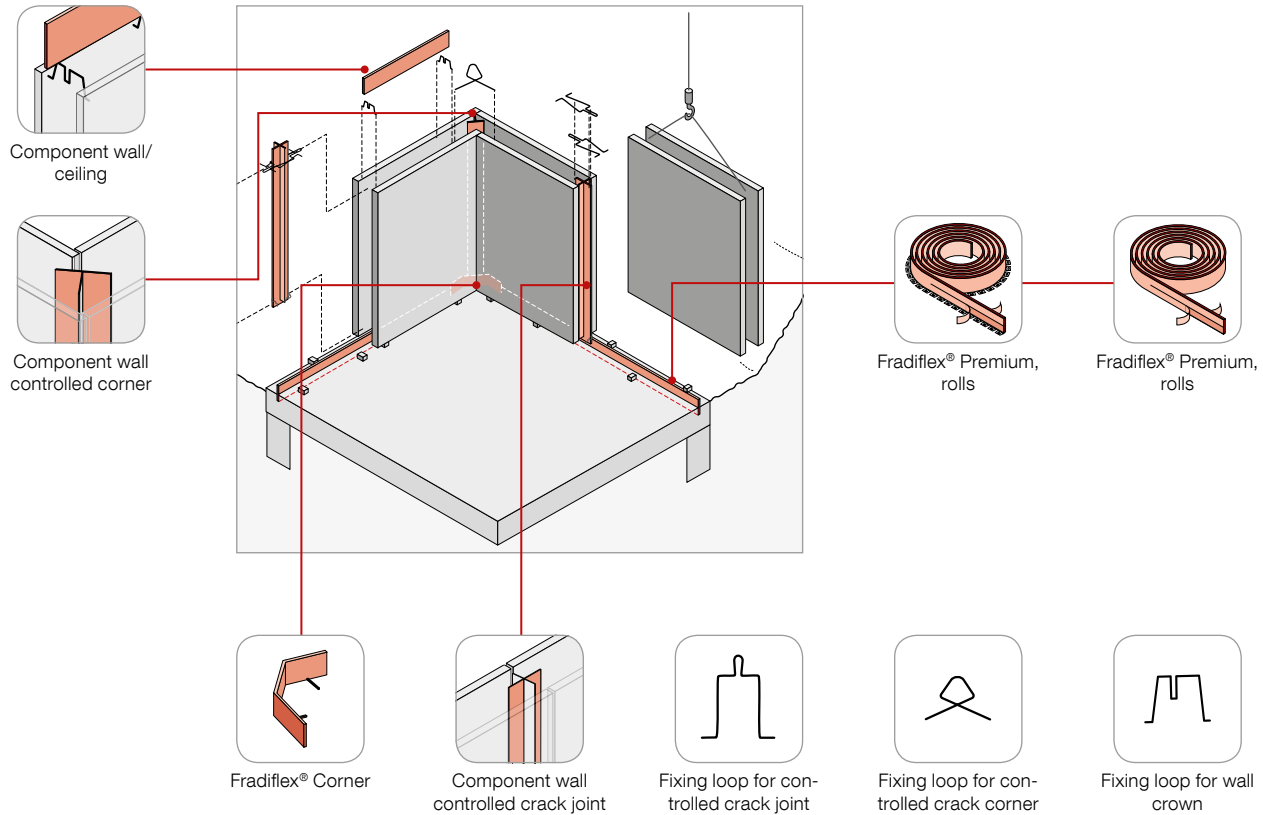


Clamping bracket



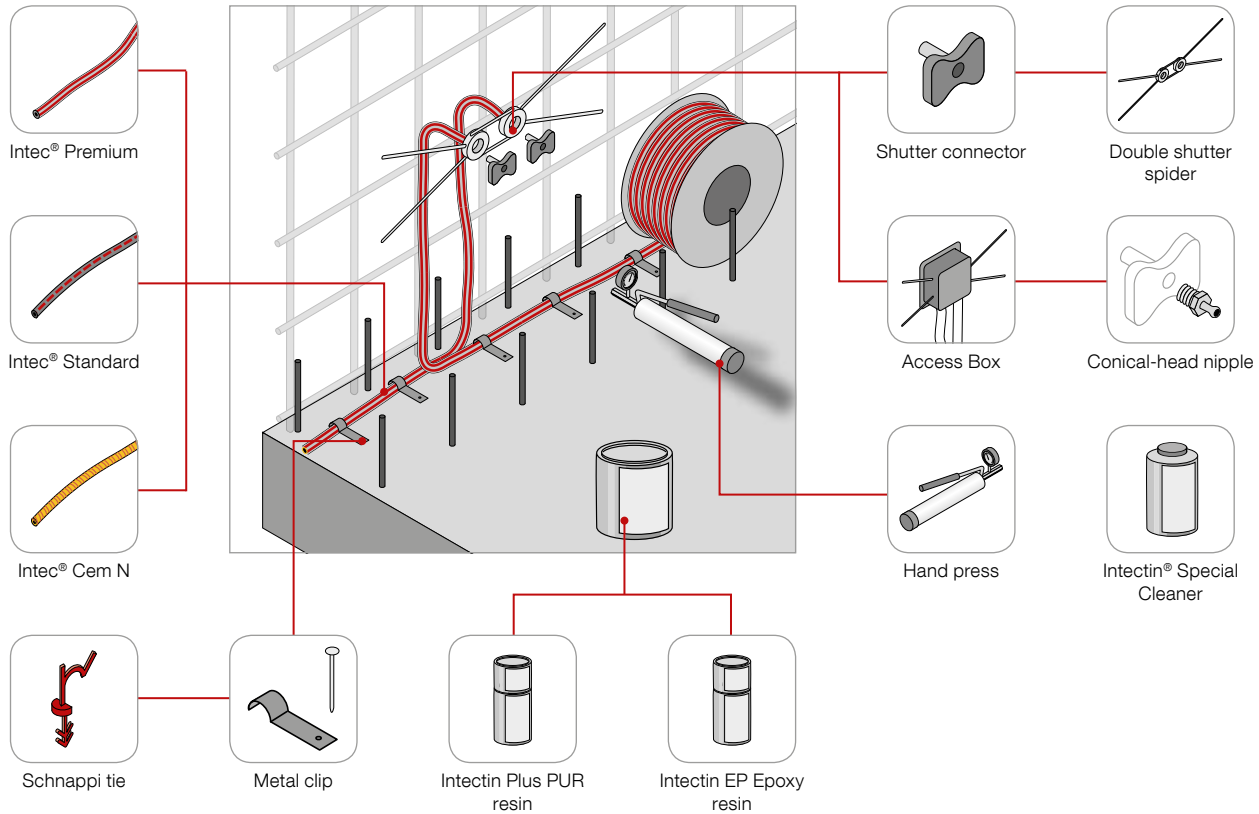


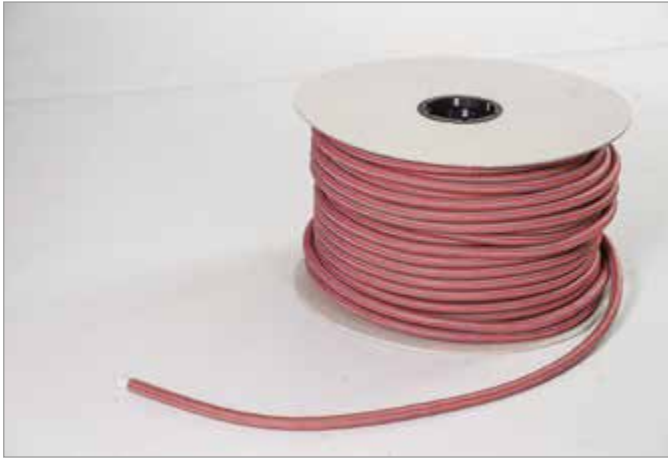
# Fradiflex® metal water stop for element walls



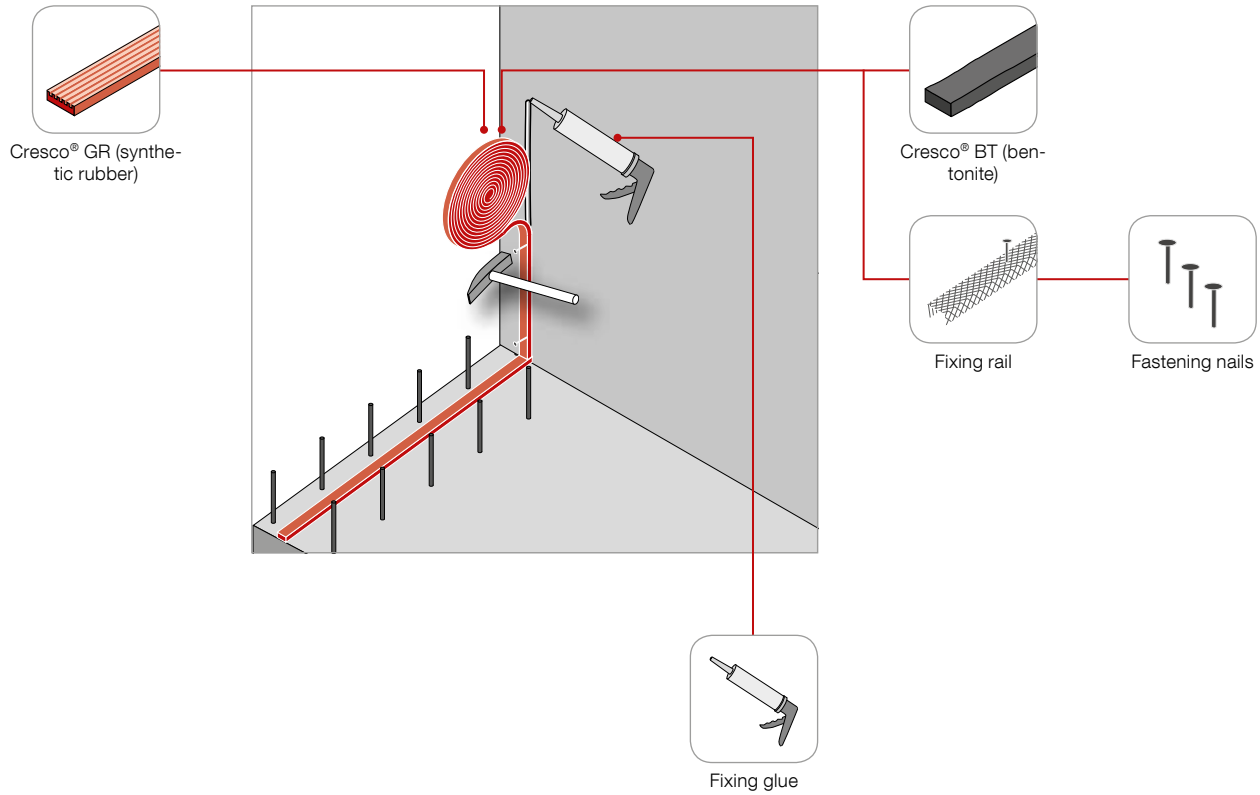


# Intec® injection hose system





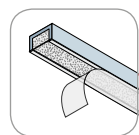
# Cresco® expanding waterstop



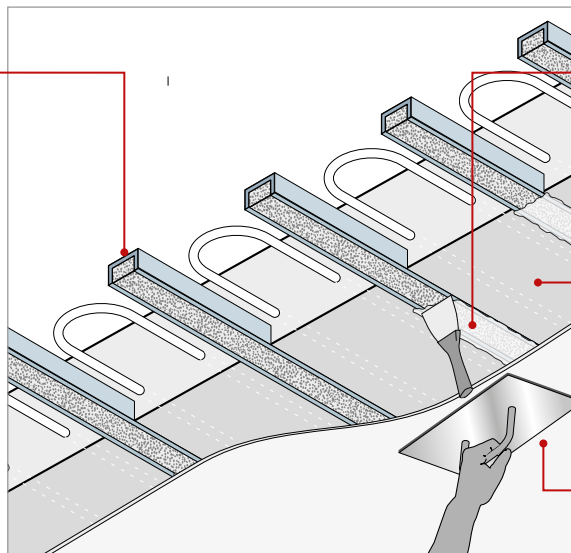




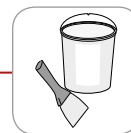
## Sorp 10® room-acoustic sound absorber



Sorp 10®



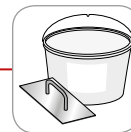
acoustically open coating



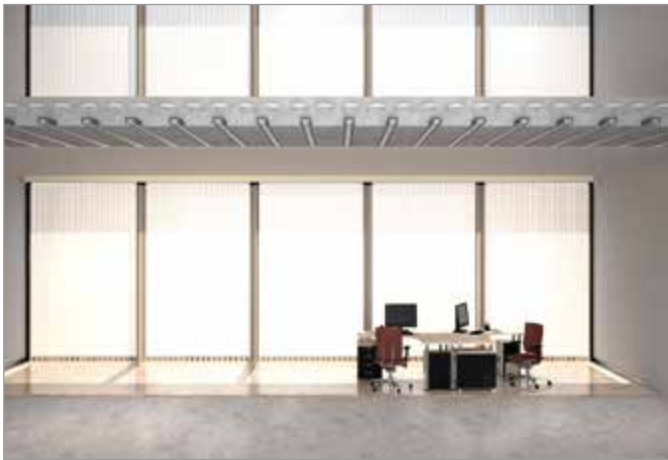
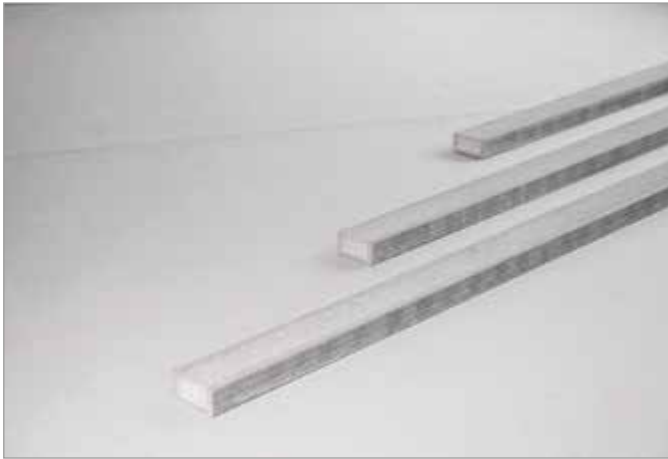
Sorp filler grout

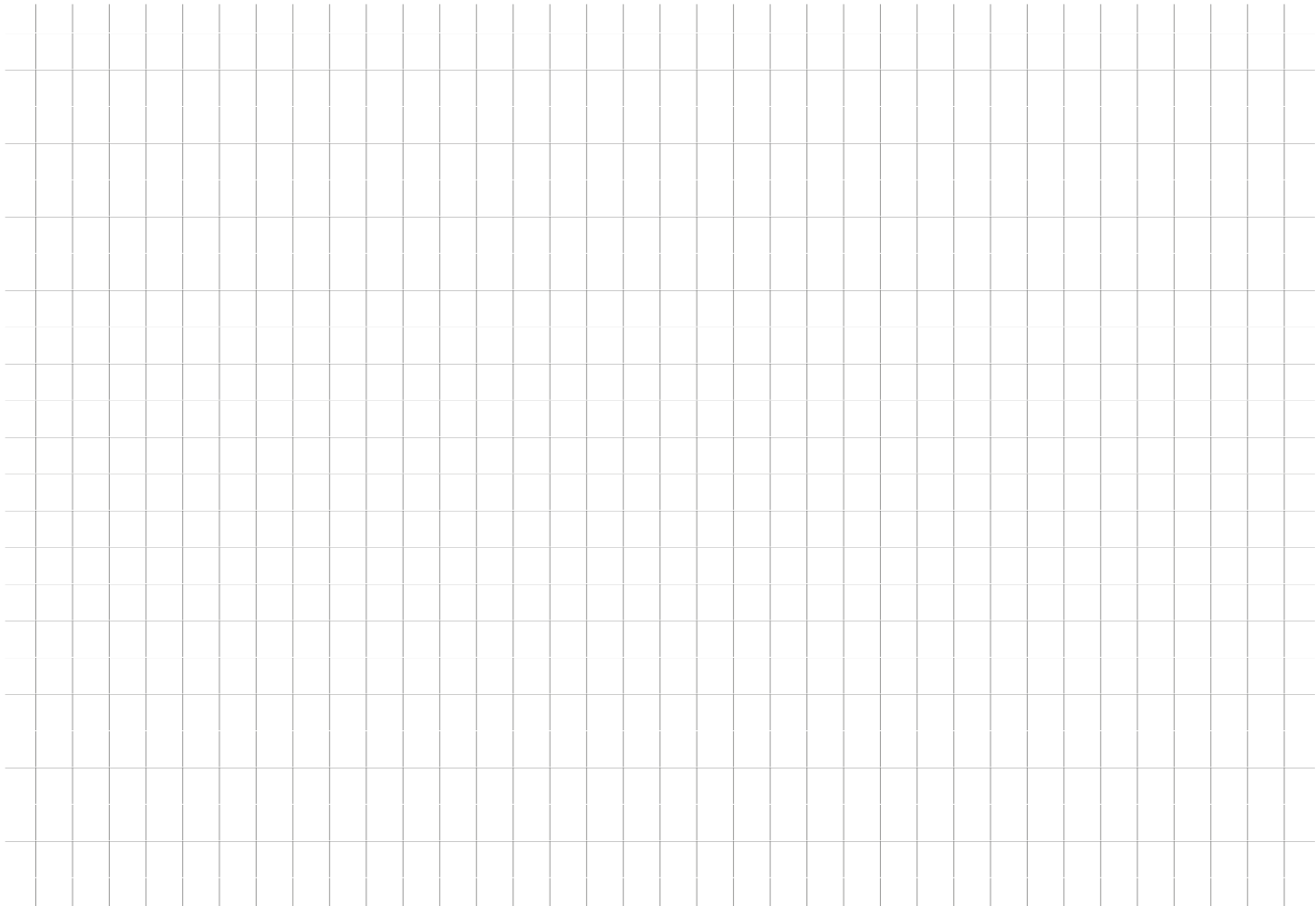


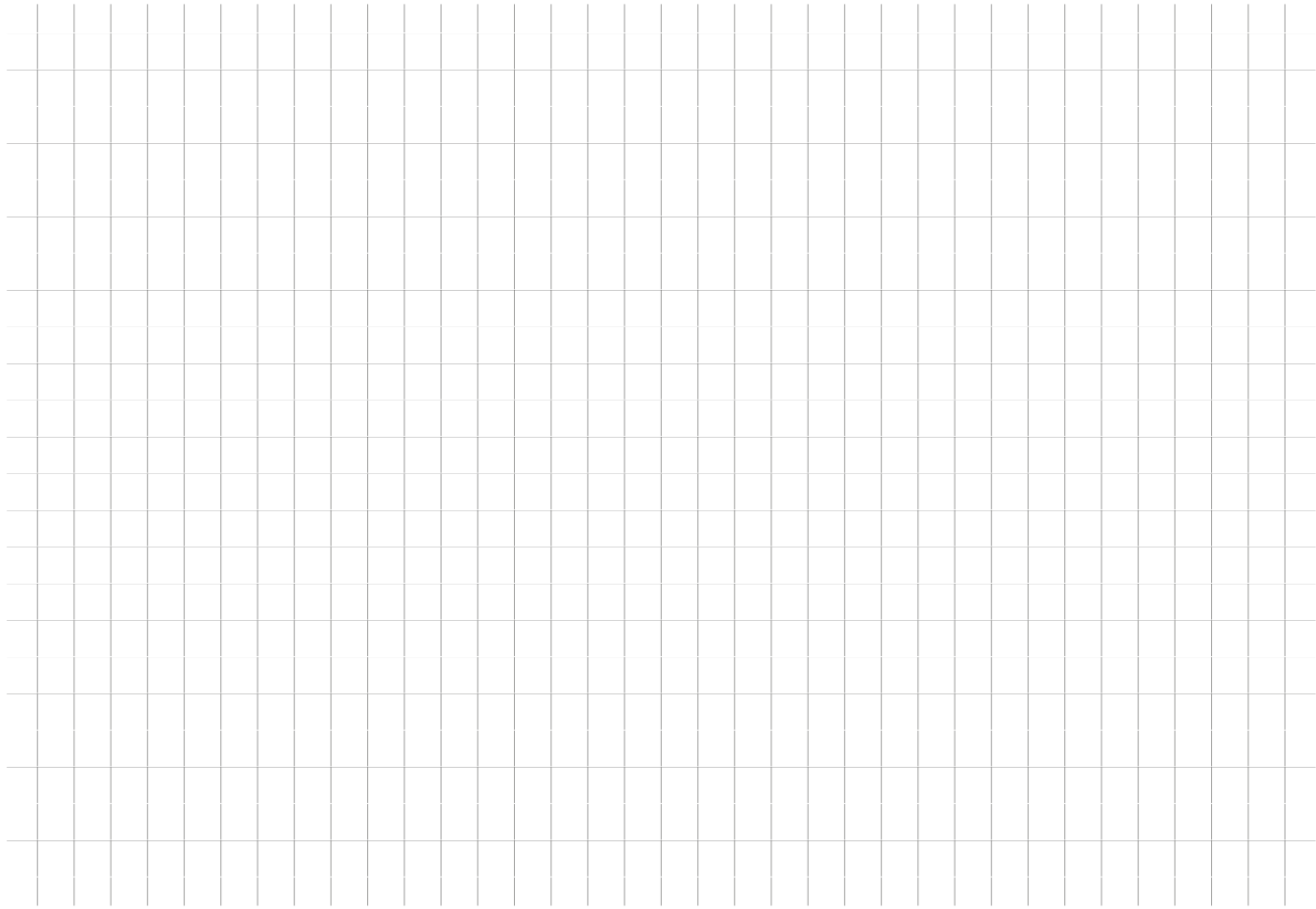
Sorp Primer



Sorp Acoustic  
plaster











**Max Frank Ltd.**

Clough Street, Hanley,  
Stoke-on-Trent, Staffordshire, ST1 4AF  
United Kingdom

Tel. +44 1782 598041

[info@maxfrank.co.uk](mailto:info@maxfrank.co.uk)  
[www.maxfrank.com](http://www.maxfrank.com)