

BUILDING
COMMON GROUND



Product List

valid from 1st February 2023



www.maxfrank.com



Spacers

Fibre concrete spacers	12
Cast concrete spacers	24
Plastic spacers	26
Steel spacers	29
Fibre concrete distance tubes	31
Sealing cones and plugs	35
Spacers and distance tubes for drinking water application	41

Formwork technologies

Pecafil® permanent formwork	46
Stremaform® stay-in-place formwork for working joints	51
Stremaform® stay-in-place formwork for expansion joints	64
Tubbox® column former	68
Zemdrain® CPF liner	73
Balcony and ceiling edge formwork	78
Box-out shutters and recess formers	81
Trennfit release agent	85
Formwork accessories	89

Reinforcement technologies

Egobox® thermal break balcony connector	94
Egobox® FST steel thermal break connector	101
Egcodorn® shear force dowel	104
Stabox® continuity strip	111
MAX FRANK Coupler threaded connection	117

Sealing technologies

Zemseal® sub-structure waterproofing system	124
Fradiflex® metal waterstop	127
Intec® injection hose system	132
Cresco® expanding waterstop	141

Building acoustics

Sorp 10® room-acoustic sound absorber	146
Egcopal impact sound insulated shear force dowel	148
Egcosono stair landing bearing	152
Egcostep® stair flight decoupling	155
Egcoscal stair beddings	157
Egcodist wall and floor bearings	161
Egcovoid® void former	163



**BUILDING
COMMON GROUND**



OUR BUSINESS MODEL



We accompany our customers reliably through every building phase with a technically sophisticated and intensive intermeshing of industrial production, high-quality products and multifaceted services.

HOW WE WORK



We listen attentively and ask the right questions – questions that penetrate to the core of the task. We at MAX FRANK call that: “BUILDING COMMON GROUND”.

OUR STRENGTH



A wide range of products, high-quality product combinations, project solutions, intermeshing of planning, production and sales

CUSTOMER BENEFITS



Saving of costs and time, solution from a single source

THE COMMON APPROACH



Sustainable and safe reinforced concrete structures



MAX FRANK

News

Projects

Company

Careers

Contact

Buildings

Products

Service

Download

Product Overview



Products

With a reference search you can pinpoint the exact MAX FRANK product for your solution even faster and more precisely: simple filtering and targeted searches.

Joint

Choose joint

Thermal insulation

Exposed concrete concrete quality

Reset filter

Save search

Formwork

Choose formwork

Sound insulation

Precast element

Sealing

Sealing with concreting

Fire protection

Force transfer

10 results found!



Continuity Strip Stabox - special coating



Continuity Strip Stabox - custom version SQ



Continuity Strip Stabox - joint seal



Formwork elements for controlled crack joints Stremaforme with rubber water bar cage



Formwork elements for controlled crack joints Stremaforme with coated metal water stop



Formwork elements for expansion joints Stremaforme with rubber water bar cage and shear force transmission



Formwork elements for working joints Stremaforme - custom shapes



Formwork elements for working joints Stremaforme with rubber water bar cage



Formwork elements for working joints Stremaforme with metal water stop



Formwork elements for working joints Stremaforme with coated metal water stop

Follow us on



**BUILDING
COMMON GROUND**



MAX FRANK BUILDINGS

The popular tool is integrated in the website and linked with extensive product information. The virtual landscape provides you with the optimal products for the following types of structure: railway station, bridge, office building, high-rise building, industrial building, sewage plant, museum, drinking water tank, tunnel, hydroelectric power station and residential building.



PRODUCT FINDER

Simply filter by the application areas and product properties relevant for you and you will find the ideal product for your requirements.



Joint Designer

The joint designer shows the range of connection joints in concrete structures according to the classification between construction joints, predetermined crack joints, expansion joints, sound separation joints and settlement joints.



ALWAYS UP TO DATE

Never miss out! We keep you updated about new products, the latest software and special solutions. Simply sign up for our newsletter free of charge and without obligation and follow us on LinkedIn and YouTube!

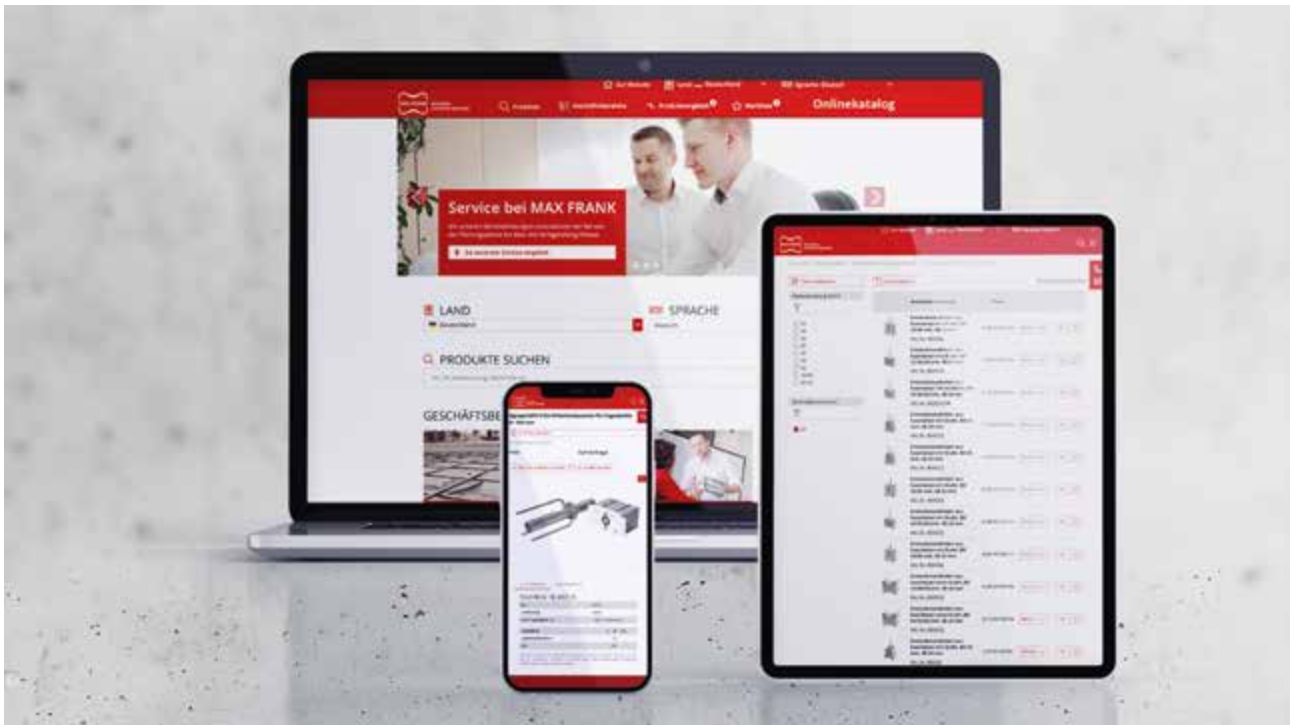


ONLINE CATALOGUE

You can find current product and price information in our online catalogue.

Also use functions such as the product comparison, the watch list or the PDF download of article information.





Online catalogue

Search, find and compare MAX FRANK articles.

From now on, this can be done easily online - with the new **online catalogue**.

In the online catalogue you will find a variety of product information, such as article numbers, pictures, descriptions, technical and logistics data and current prices.



Practical features:

Search and filter

With search and filter options you can quickly find the desired items.

Product comparison

Select up to ten items and compare their features at a glance.

Watchlist

Easily start a quote request for the items on the watch list.

Data sheet download

Create a PDF with the most important product information with just one click.

► Try the online catalog now



Service at MAX FRANK is multifaceted and therefore very personal.

With our services, we support you from the planning phase to beyond completion and create individual, holistic and economical project solutions together with you.

Our customer service team will be happy to advise you and is available Monday to Thursday from 7:30 a.m. to 5:00 p.m. and Fridays from 7:30 a.m. to 1:30 p.m.:



+49 9427 189-320



customerservice@maxfrank.de

Notes regarding the Product List

We generally deliver on the basis of our general terms and conditions of sale and in the defined packaging units. Information about this can be found in the respective product areas. Different delivery quantities are possible on request and by arrangement. We charge a minimum quantity surcharge for these fractional quantities. A freight rate will be charged for shipment.



MAX FRANK

BUILDING
COMMON GROUND

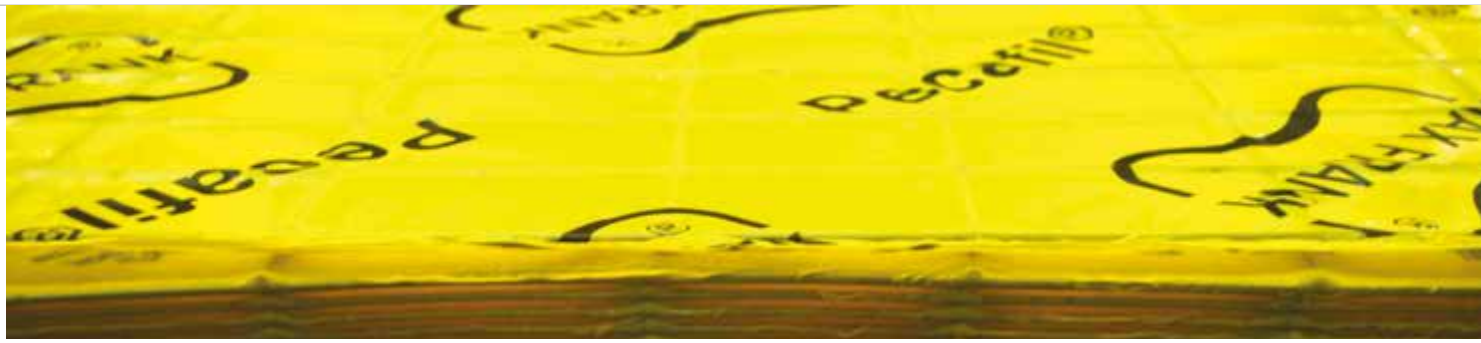
Formwork technologies



Formwork technologies

Economical design, efficient product combination and improved concrete quality – MAX FRANK formwork technologies include a wide range of formwork solutions.



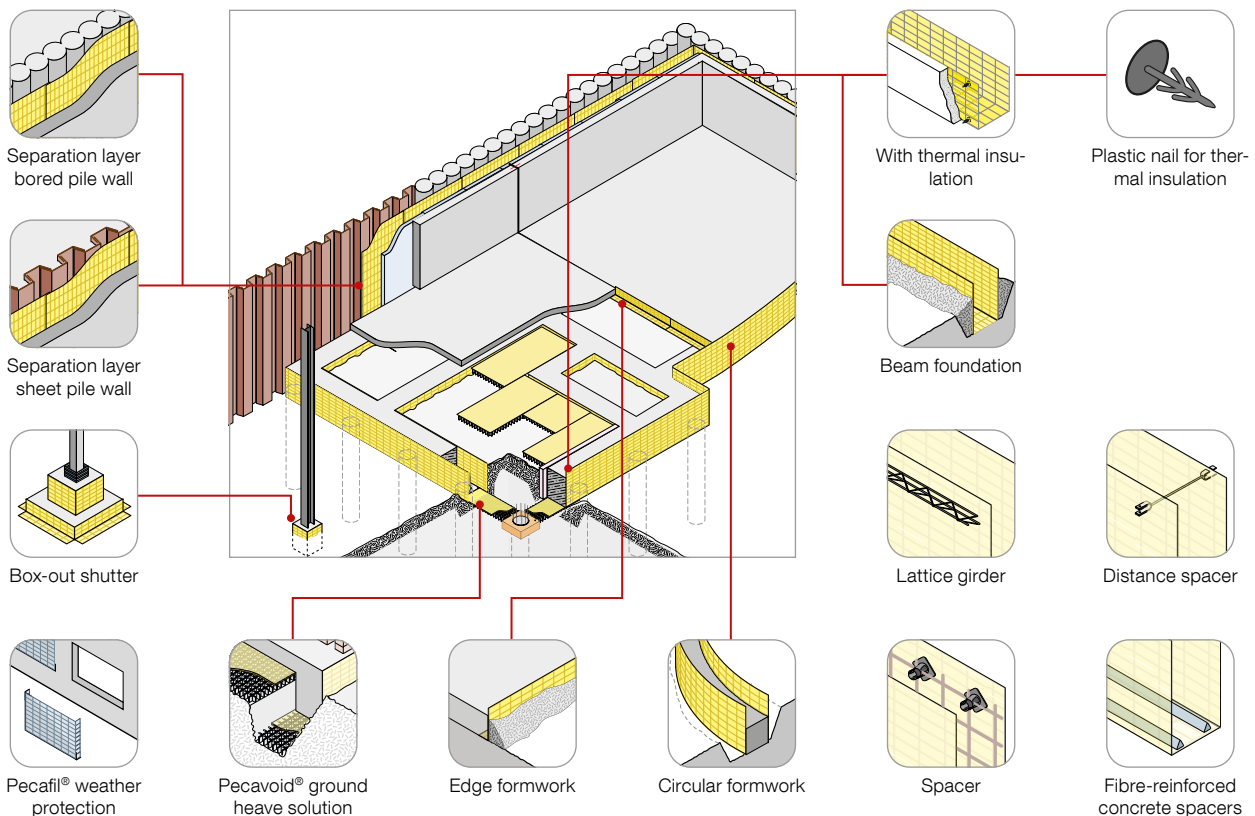


Pecafil® permanent formwork

Pecafil® formwork elements can be used universally for many purposes, above all as formwork for foundations and ribbed slabs as well as sheeting for building pits. It is also suitable in the transparent version for weather, dust and protection screens. The material is available in different thicknesses. Thanks to its light weight it is easy to carry and install. The units can be shortened and adapted on the building site using simple tools. Pecafil® can also be supplied as pre-formed sections. Pecafil® permanent formwork is environmentally friendly, groundwater-neutral and recyclable.

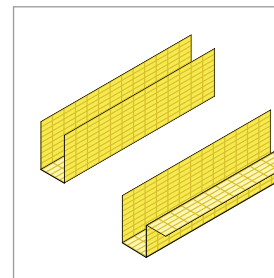
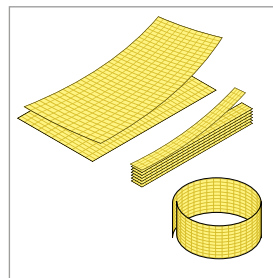
★ Advantages

- Fast and simple installation of the formwork
- No need for lifting equipment
- No time or costs for stripping, cleaning and returning the formwork
- Release agent is not necessary



Pecafil® cutting and bending

Available as flat material or bent according to your specifications. Other shapes on request. When bending on site, care should be taken to ensure the main bar is always on the inside of the Pecafil® section (VR6)! Processing costs for bending and cutting on request. The residual pieces resulting from cutting are supplied.



Pecafil® components

WG: 232

Description	Item No.	Packaging unit Pcs
Pecafil® adhesive tape, PVC adhesive tape, yellow, extra strong, frost-proof, roll length 33 m, roll width 50 mm	PVE0036	36
Pecafil® spacer, plastic bar spacer, required quantity 8 pcs./m ² (refer to installation instructions)	UKGP4050B	200
Pecafil® lattice girder E10, standard length 4.20 m	PV180000000	-
Pecafil® distance spacer, applicable to the width of the foundation	PV170000000	-
Plastic nail for thermal insulation	PVE0029	50

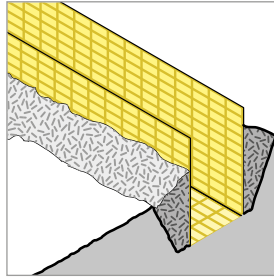
Pecafil® sheets and Pecafil® formwork strips

For further article and price information on Pecafil® sheets and Pecafil® formwork strips, please refer to the MAX FRANK online catalogue.



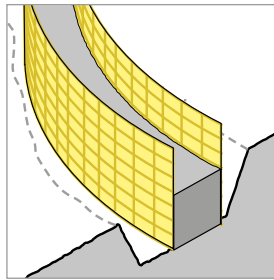
Pecafil® strip foundation

Pecafil® is mainly used as formwork for strip foundations. These can be executed both below and above ground. When using Pecafil®, no additional working space is required for support.



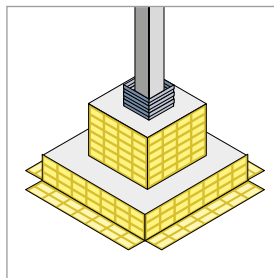
Pecafil® circular formwork

For curved foundations Pecafil® formwork material is bent to the foundation shape on site. The material can be supplied pre-bent for smaller dimensions.



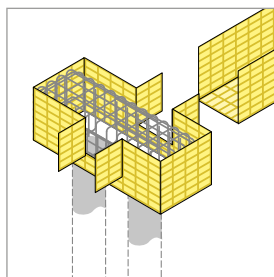
Pecafil® box-out shutter

Pecafil® universal formwork material as external shuttering for pocket foundations is pre-bent and delivered in the correct height to the building site. Circular foundations are very simple to manufacture using pre-bent units.



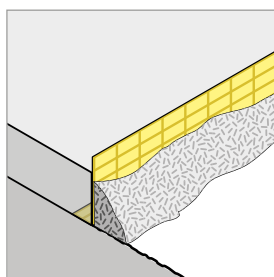
Pecafil® pile cap formwork

Since several piles are often combined in one foundation in the pile cap area, variable shapes can be created. Pecafil® is pre-bent accordingly and delivered in the correct height as specified by the building site.



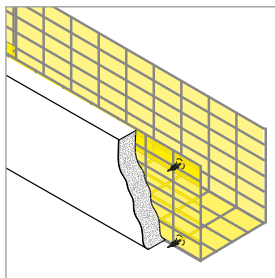
Pecafil® edge formwork

With Pecafil® edge formwork, floor or ceiling slabs can be shuttered at the edge. When using semi-prefabricated members, Pecafil® units are suitable for the shuttering of the slab edges.



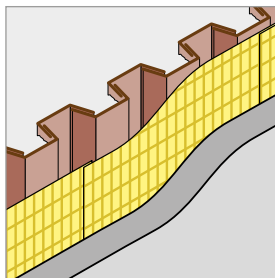
Pecafil® with thermal insulation

Before concreting the foundation, the on-site thermal insulation can be installed between the reinforcement and the Pecafil® formwork or between the Pecafil® formwork and the earth to be filled. Both methods are quick and simple to construct.



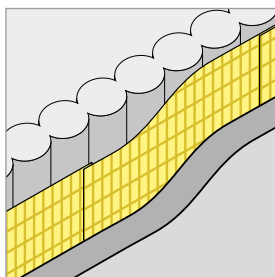
Pecafil® separation layer for sheet piles

The separation layer made of Pecafil® withstands even high concreting pressure and serves as a separating and sliding layer to facilitate subsequent pulling of the sheet piles. Installation by means of welding is carried out directly on the sheet pile wall.



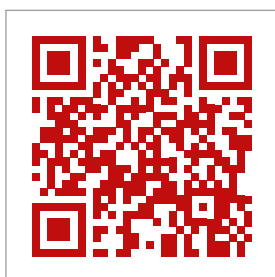
Pecafil® separation layer for bored piles

The separation layer made of Pecafil® reduces concrete consumption and withstands high concreting pressure. Installation by means of specialized bolt fixings is carried out directly or with the aid of propping on the bored pile wall.



Application video for Pecafil® foundation formwork

By scanning the QR code you can watch an application video of the Pecafil® foundation formwork. Pecafil® formwork sections are delivered to the building site pre-assembled and can be installed simply by hand in just a few steps. The video demonstrates simple installation step-by-step.



Pecafil® weather protection

- As temporary weather, dust and privacy protection screens
- 2-year UV-stabilisation
- Galvanized wires



WG: 230

Item No.	Type	Length mm	Width mm	Area m²/pce.
PV150003200	FV 2.4	2400	3200	7.68

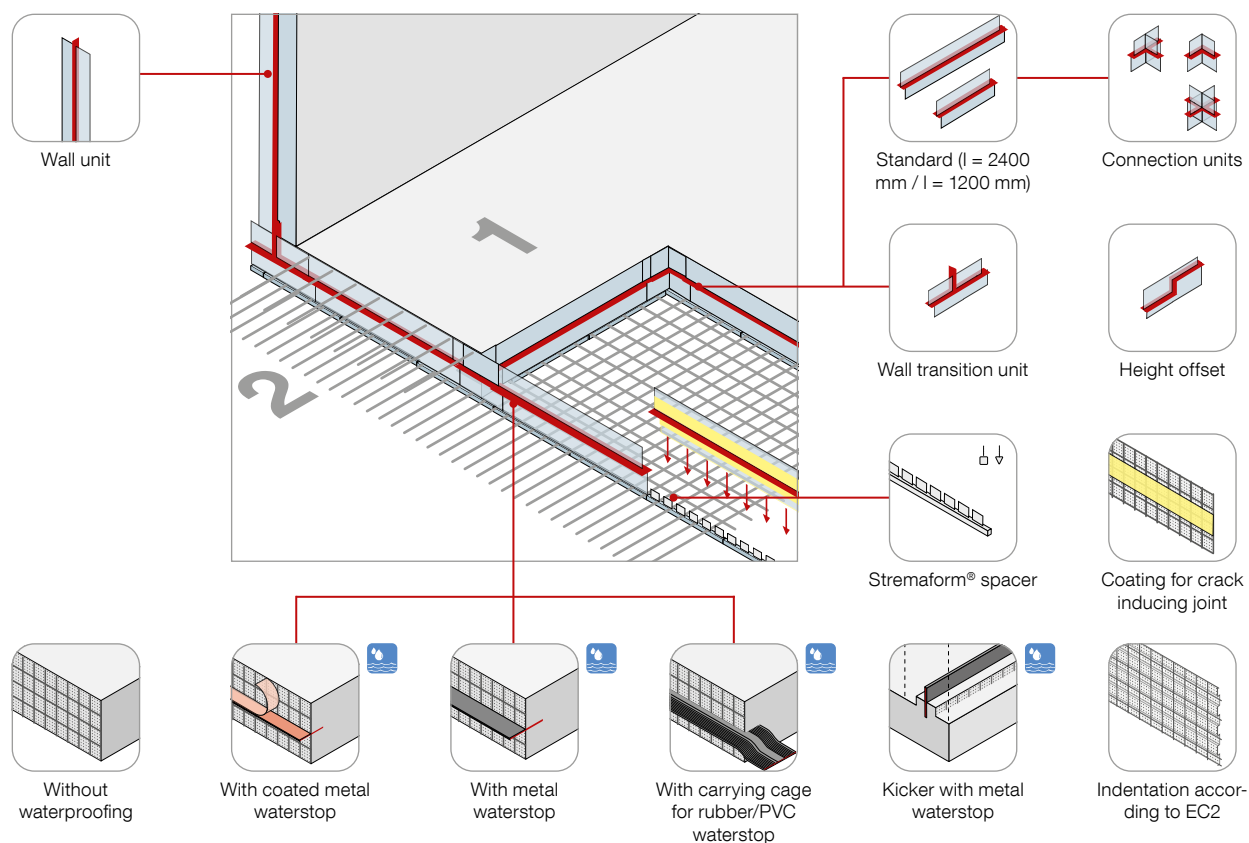


Stremaform® stay-in-place formwork for working joints

Stremaform® formwork is the leading product of ready-to-install formwork systems for working joints. The formwork elements are used as permanent formwork in floor slabs, ceilings and walls. Stremaform® products for working joints have been developed and constructed in Germany by MAX FRANK for more than 30 years.

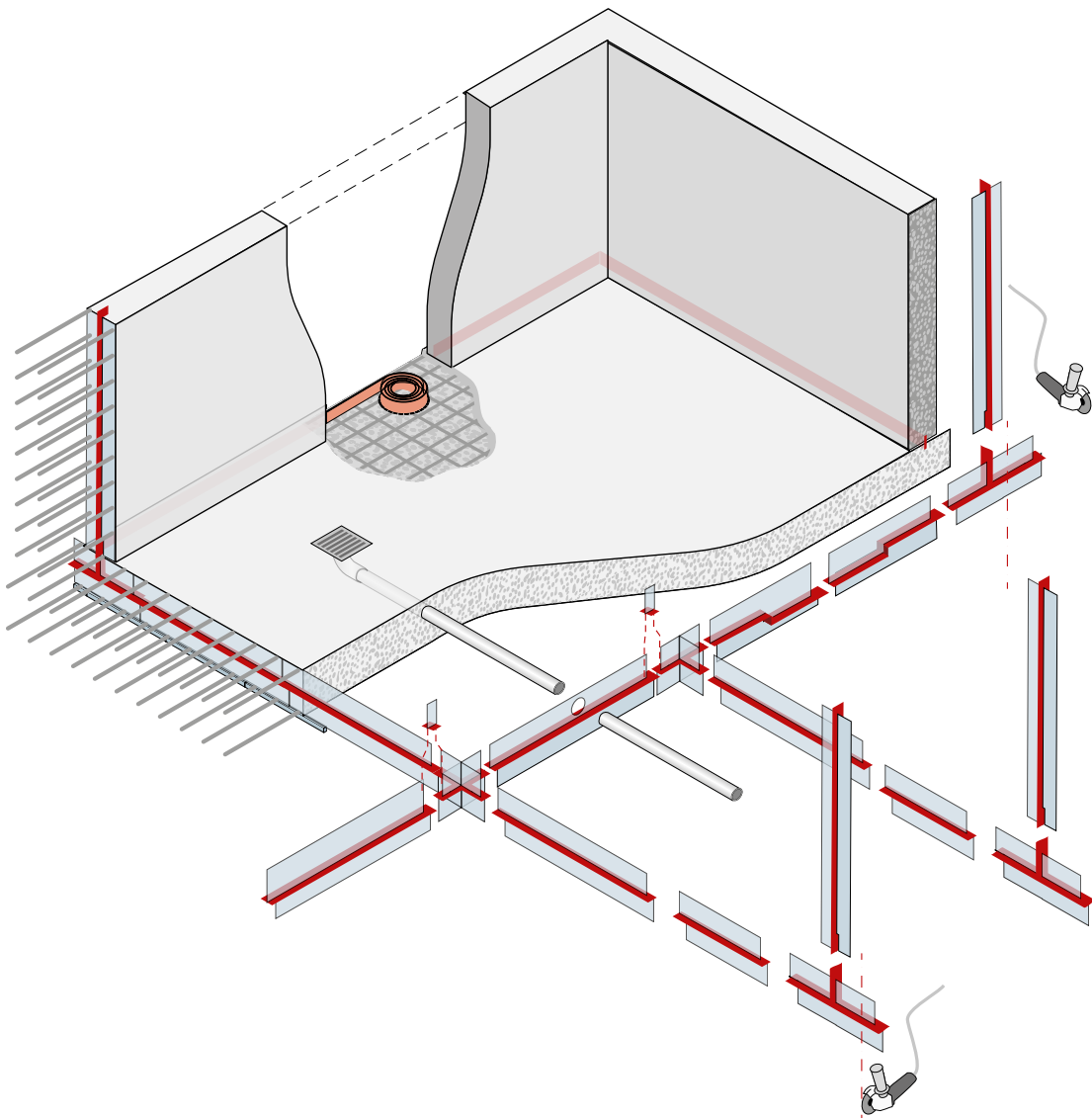
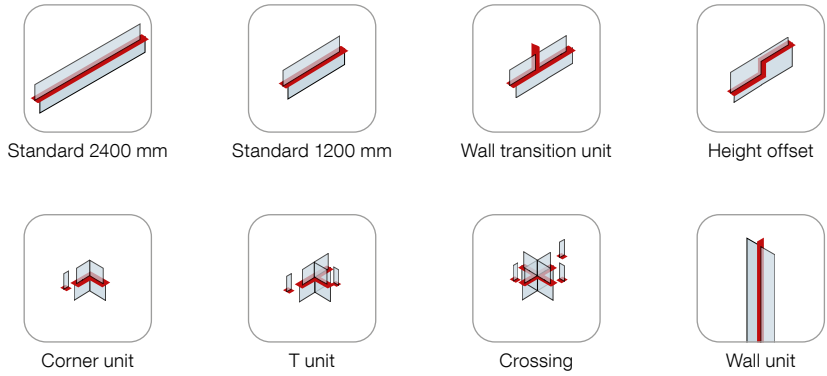
★ Advantages

- Faster and more cost-effective formwork compared to timber formwork
- Reliable and functional formwork element
- Proven quality: Engineered in Germany for over 30 years
- No dismantling or disposal of formwork material

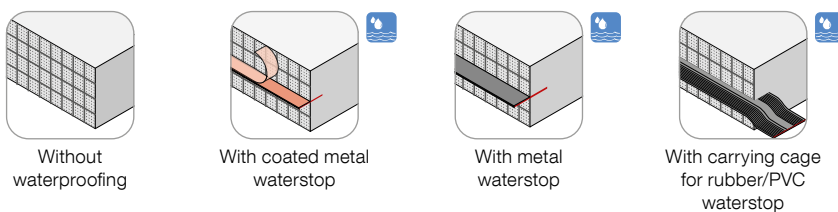


Stremaform® modular system

Stremaform® formwork elements for working joints in slabs and walls are planned, manufactured and delivered as a modular system. Standardised units are available for a wide range of applications and uses.

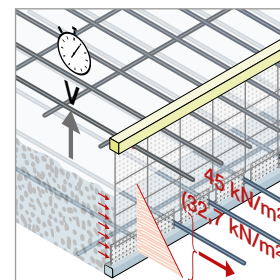


Stremaform® waterproofing variants



Stremaform® variants

Stremaform® formwork elements for working joints are structurally designed to withstand a maximum fresh concrete pressure of 45 kN/m² (32.7 kN/m² for installation dimensions > 1800 mm). They are produced in different variations and strengths depending on the pour height. Decisive for the design variant is the installation dimension, which describes the distance between lower and upper reinforcement.



Stremaform® geometry

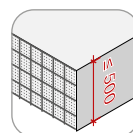
Standard 2400 mm	Standard 1200 mm Wall transition unit Height offset	Corner unit T unit Crossing	Standard Wall unit

Bracing depending on the installation dimension

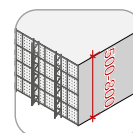
Stremaform® formwork elements for working joints with and without waterproofing systems are braced as follows:

Slab

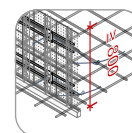
- Partially braced up to an installation dimension $h \leq 500$ mm
- Braced from an installation dimension $h > 500$ mm
- For installation dimensions $h > 800$ mm we recommend our Stremaform® back anchoring system



Partially braced
 $h \leq 500$ mm



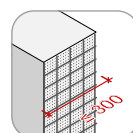
braced
 $500 \text{ mm} < h \leq 800$
mm



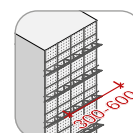
braced + back
anchoring
 $h > 800$ mm

Wall

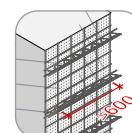
- Partially braced up to an installation dimension $b \leq 300$ mm
- Braced from an installation dimension $b > 300$ mm
- For installation dimensions $b > 600$ mm we recommend our Stremaform® back anchoring system



Partially braced
 $b \leq 300$ mm



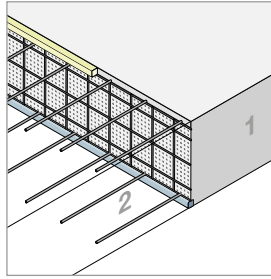
braced
 $300 \text{ mm} < b \leq 600$
mm



braced + back
anchoring
 $b > 600$ mm

Stremaform® formwork for working joints without waterproofing

Stremaform® formwork elements for working joints without waterproofing systems, available as partially braced or braced version. The elements are installed between the reinforcement layers in the slab or wall.



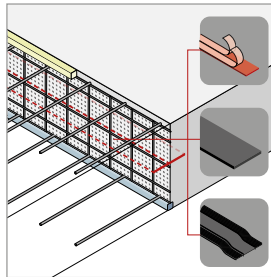
WG: 244

	Description	Length mm	Installation dimension mm
	Standard unit	2400	100 - 2000

As standard, the stiffened version is recommended from an installation dimension of 310 mm (walls) and 510 mm (slabs). Stiffening below 310 mm (walls) is not possible.

Stremaform® formwork for working joints prepared for different waterproofing systems

Stremaform® elements can be fitted with coated or uncoated metal water-stop or waterstop cage.



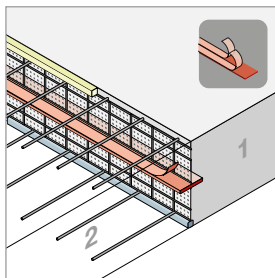
WG: 244

	Description	Length mm	Installation dimension mm
	Standard unit	2400	100 - 2000

As standard, the stiffened version is recommended from an installation dimension of 310 mm (walls) and 510 mm (slabs). Stiffening below 310 mm (walls) is not possible.

Option coated metal waterstop

The standard version with coated metal waterstop is Fradiflex® Premium 150/1.5 mm with double-sided coating. Single-sided coating variants are possible.



WG: 244

Description

Metal waterstop 150/1.5 mm (standard)

Double-sided coating (standard)

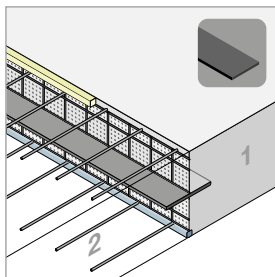
One-sided coating

One-sided coating for prefabricated shaped elements transition wall, height offset, corner, T, crossing

Other sizes of metal waterstops on request.

Option metal waterstop (uncoated)

For design with uncoated metal waterstop, different metal waterstop variants are available. Design variants with angled metal waterstop and/or butt joint coatings are possible.



WG: 244

Description

Metal waterstop 250/1.5 mm

Metal waterstop 250/2.0 mm

Metal waterstop 300/1.5 mm

Metal waterstop 300/2.0 mm

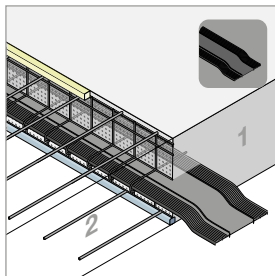
Upstand 15° on both sides

Coating on overlap

Other sizes of metal waterstops on request.

Option waterstop cage

For design with waterstop cage, different waterstop cage variants are available for the insertion of waterstops or metal waterstops. Design variants with angled waterstop cage are possible.



WG: 244

Description

Waterstop cage 80/20-5 mm (for insert of coated metal waterstop)

Waterstop cage 250/30-16 mm

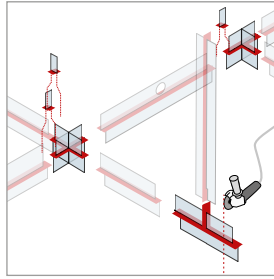
Waterstop cage 320/30-16 mm

Upstand 15° on both sides

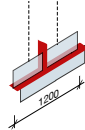
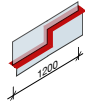
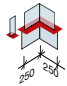
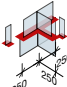
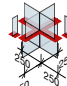
Other waterstop cage sizes on request.

Option Stremaform® prefabricated shaped elements

Stremaform® prefabricated shaped elements complete the modular system. They offer the possibility of combining straight standard elements with waterproofing systems in such a way that transitions into walls, height offsets in the waterproofing level and connections between construction joints across corners are possible.



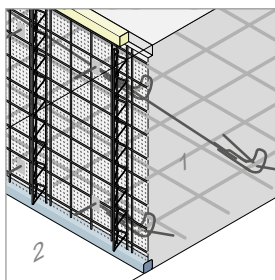
WG: 244

	Description	Length mm
	Wall transition unit	1200
	Height offset	1200
	Corner unit with metal waterstop	500
	T unit with metal waterstop	750
	Crossing with metal waterstop	1000

Corner, T and cross shaped parts are not available for the waterstop cage variant.

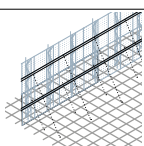
Stremaform® bracing

The Stremaform® bracing system is used to secure Stremaform® formwork elements from an installation dimension of ≥ 800 mm during the installation phase and to accommodate the concrete pressure. We offer two versions: (1) Stremaform® with double bar bracing to accommodate the on site, diagonally welded tensile bars. (2) Stremaform® bracing system (double bar bracing + tensile bar system) for weld-free bracing.



Option Stremaform® double bar bracing

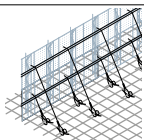
WG: 242

	Item No.	Application	Installation dimension
			mm
	PV4900DS1200	Slab	1200
	PV4900DS2000	Slab	2000
	PV4900DS0800	Wall	800
	PV4900DS1400	Wall	1400

Stremaform® bracing for larger installation dimensions on request.
Diagonal bars are not included in the scope of delivery.

Option Stremaform® bracing system (weld-free)


WG: 242

	Item No.	Application	Installation dimension
			mm
	PV490001200	Slab	1200
	PV490002000	Slab	2000
	PV490000800	Wall	800
	PV490001400	Wall	1400

Stremaform® bracing for larger installation dimensions on request.
Tensile bars and safety bars are included in the scope of delivery.

Stremaform® eccentric clamp for fixing the diagonal bars on Stremaform®

WG: 242

	Description	Item No.	Packaging unit
			Pcs
	Eccentric clamp, reusable for round bar diameter 5 - 10 mm	PVE0123	50

The eccentric clamp is reusable and ordered as required.

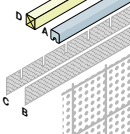
Option prefabricated cut outs (detailing levels 2 and 3)

WG: 244

	Description
	Cut to fixed length
	Cut to size on one side, conical
	Cut of penetration

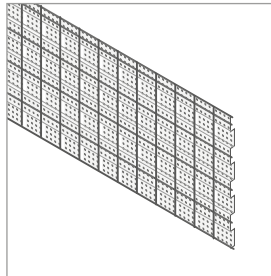
Option edge detailing

WG: 244

	Description	Width mm
	Fibre concrete bar, glued, up to concrete cover 40 mm	-
	Fibre concrete bar, glued, from concrete cover 45 mm	-
	Expanded metal overhang (standard)	30
		50
		70
	Comb for reinforcement (standard)	80
		120
		160
	Timber batten on one side	-

Option Stremaform® with indentation

Stremaform® formwork for working joints can be executed with an optional indented surface to Eurocode 2 (EN 1992-1-1).

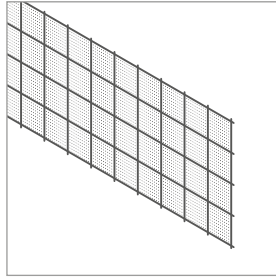


WG: 244

Description
Indented surface according to EN1992-1 (EC2)

Option Stremaform® for concrete of high fluidity

All variants of Stremaform® formwork for working joints can be produced to incorporate an optional close-meshed expanded metal for concretes with high fluidity.

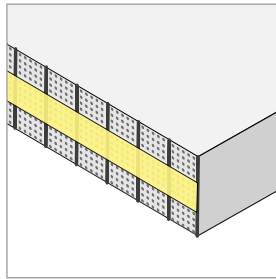


WG: 244

Description
Surface fine-meshed

Option Stremaform® crack inducing formwork

Stremaform® crack inducing formwork reduces a frictional connection between concrete pours over at least 1/3 of the structural element thickness in order to produce a controlled crack.



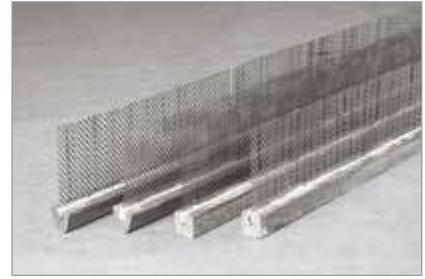
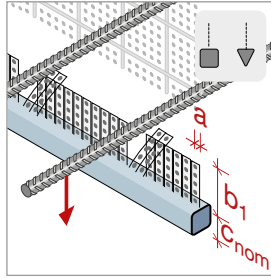
WG: 244

Description
Crack inducer formation with integrated separation layer (1/3 of the component thickness)

Crack inducer execution for the continuous concrete sequence on request.

Stremaform® System-Spacer with fibre-reinforced concrete strip

The Stremaform® System-Spacer serves as a spacer and sealing strip and prevents time-consuming cleaning work. Furthermore, the two comb patterns and three comb heights offer full flexibility regarding reinforcement diameters, spacings and layers.



Stremaform® System-Spacer with fibre-reinforced concrete bar square

WG: 242

Item No.	Concrete cover mm	Length mm	Grid a mm	Comb height b _i mm
PV3SPV3517080	35	1200	17	80
PV3SPV3517120	35	1200	17	120
PV3SPV3517160	35	1200	17	160
PV3SPV4017080	40	1200	17	80
PV3SPV4017120	40	1200	17	120
PV3SPV4017160	40	1200	17	160
PV3SPV4517080	45	1200	17	80
PV3SPV4517120	45	1200	17	120
PV3SPV4517160	45	1200	17	160
PV3SPV5017080	50	1200	17	80
PV3SPV5017120	50	1200	17	120
PV3SPV5017160	50	1200	17	160
PV3SPV6017080	60	1200	17	80
PV3SPV6017120	60	1200	17	120
PV3SPV6017160	60	1200	17	160
PV3SPV7517080	75	1200	17	80
PV3SPV7517120	75	1200	17	120
PV3SPV7517160	75	1200	17	160
PV3SPV3530080	35	1200	30	80
PV3SPV3530120	35	1200	30	120
PV3SPV3530160	35	1200	30	160
PV3SPV4030080	40	1200	30	80
PV3SPV4030120	40	1200	30	120
PV3SPV4030160	40	1200	30	160
PV3SPV4530080	45	1200	30	80
PV3SPV4530120	45	1200	30	120
PV3SPV4530160	45	1200	30	160
PV3SPV5030080	50	1200	30	80
PV3SPV5030120	50	1200	30	120
PV3SPV5030160	50	1200	30	160
PV3SPV6030080	60	1200	30	80
PV3SPV6030120	60	1200	30	120
PV3SPV6030160	60	1200	30	160
PV3SPV7530080	75	1200	30	80
PV3SPV7530120	75	1200	30	120
PV3SPV7530160	75	1200	30	160

Grid 17 mm suitable for reinforcement diameters Ø10, Ø12, Ø14, Ø16 and Ø32 mm.
Grid 30 mm suitable for reinforcement diameters Ø20, Ø25, Ø28, Ø40 and Ø50 mm.
Fibre concrete mix with special properties on request.

Stremaform® fibre-reinforced triangular concrete spacer

WG: 242

Item No.	Concrete cover mm	Length mm	Grid a mm	Comb height b ₁ mm
PV3SPD3017080	30	1200	17	80
PV3SPD3017120	30	1200	17	120
PV3SPD3017160	30	1200	17	160
PV3SPD3517080	35	1200	17	80
PV3SPD3517120	35	1200	17	120
PV3SPD3517160	35	1200	17	160
PV3SPD4017080	40	1200	17	80
PV3SPD4017120	40	1200	17	120
PV3SPD4017160	40	1200	17	160
PV3SPD5017080	50	1200	17	80
PV3SPD5017120	50	1200	17	120
PV3SPD5017160	50	1200	17	160
PV3SPD6017080	60	1200	17	80
PV3SPD6017120	60	1200	17	120
PV3SPD6017160	60	1200	17	160
PV3SPD3030080	30	1200	30	80
PV3SPD3030120	30	1200	30	120
PV3SPD3030160	30	1200	30	160
PV3SPD3530080	35	1200	30	80
PV3SPD3530120	35	1200	30	120
PV3SPD3530160	35	1200	30	160
PV3SPD4030080	40	1200	30	80
PV3SPD4030120	40	1200	30	120
PV3SPD4030160	40	1200	30	160
PV3SPD5030080	50	1200	30	80
PV3SPD5030120	50	1200	30	120
PV3SPD5030160	50	1200	30	160
PV3SPD6030080	60	1200	30	80
PV3SPD6030120	60	1200	30	120
PV3SPD6030160	60	1200	30	160

Grid 17 mm suitable for reinforcement diameters Ø10, Ø12, Ø14, Ø16 and Ø32 mm.

Grid 30 mm suitable for reinforcement diameters Ø20, Ø25, Ø28, Ø40 and Ø50 mm.

Fibre concrete mix with special properties on request.

Spacers

Formwork technologies

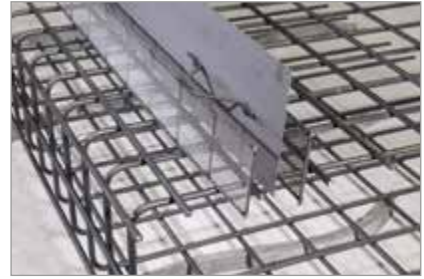
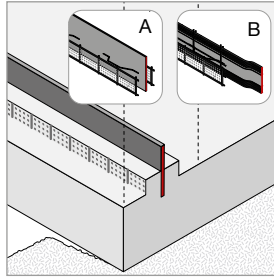
Reinforcement technologies

Sealing technologies

Building acoustics

Stremaform® kicker with metal waterstop or carrying cage for rubber/PVC waterstop

Stremaform® kicker for working joint between floor slab/wall or wall/slab, with metal waterstop 250/1.5 mm or carrying cage for rubber/PVC waterstop 250/30-16 mm for sealing. Pre-assembled formwork elements or special units available according to specification.



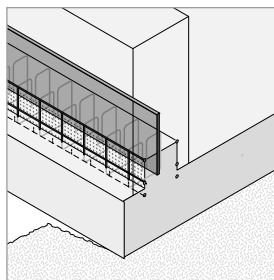
WG: 242

	Description	Item No.	Strip height mm	Length mm	Installation dimension mm
	Standard element with metal waterstop	PV3S-BW51000	150	2400	150
	Standard element with waterstop cage	PV3S-BW61000	150	2400	150
	Corner unit with metal waterstop	PV3S-BW56000	150	-	150
	Corner unit with waterstop cage	PV3S-BW66000	150	-	150
	T unit with metal waterstop	PV3S-BW57000	150	-	150
	T unit with waterstop cage	PV3S-BW67000	150	-	150
	Crossing with metal waterstop	PV3S-BW58000	150	-	150
	Crossing with waterstop cage	PV3S-BW68000	150	-	150

Further dimensions available on request.

Stremaform® kicker for installing metal waterstop on site

Stremaform® kicker between floor slab/wall with holder for a metal waterstop.

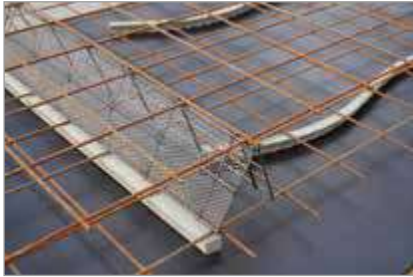
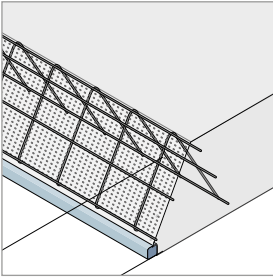


WG: 242

Item No.	Strip height mm	Length mm	Installation dimension mm
PV204800120	120	2400	120
PV204800150	150	2400	150

Stremaform® A-Bock, free-standing

Self-supporting, stay-in-place Stremaform® formwork is available for slabs in different heights.



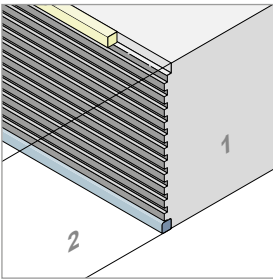
WG: 242

Item No.	Length mm	Installation dimension mm
PV200400000-EBM140	2400	140
PV200400000-EBM160	2400	160
PV200400000-EBM180	2400	180
PV200400000-EBM200	2400	200
PV200400000-EBM220	2400	220
PV200400000-EBM240	2400	240
PV200400000-EBM250	2400	250

Further dimensions available on request.

Stremaboard

Stremaboard consists of a profiled, lightweight expanded metal. The material and the simple cutting to size by the customer are ideal for individual adaptation to working joints on site. The profile satisfies the requirements of Eurocode 2 so that working joints produced are to be classified as indented joints.



WG: 241

Item No.	Length mm	Width mm	Pallet content Packaging unit	Weight kg/pallet
PV2020	2400	800	100	584



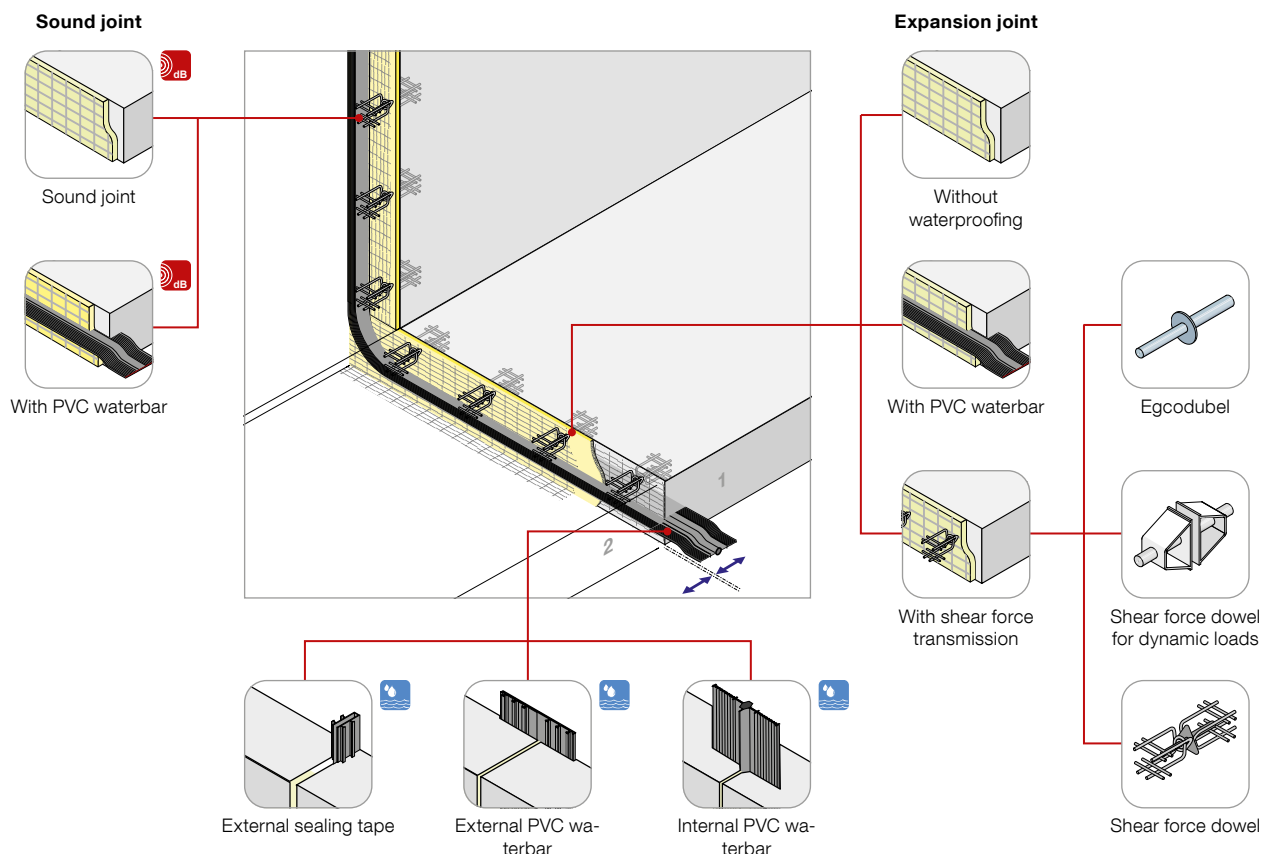
Stremaform® stay-in-place formwork for expansion joints

Stremaform® formwork elements for expansion joints decouple components and absorb their movements within the joint. The elements are used as permanent formwork in floor slabs, ceilings and walls. The formwork elements are prefabricated by us to size, no stripping is required. Reinforcement and concreting can be continued independently and without interruption.

We produce the expansion joint elements with the joint insert of your choice: Rigid foam, heat-resistant mineral wool or sound-insulating mineral fibre.

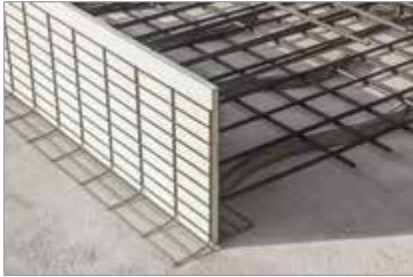
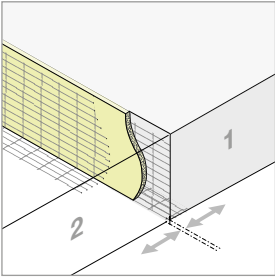
★ Advantages

- Faster and more cost-effective formwork compared to timber formwork
- No dismantling or disposal of formwork material
- Reliable and functional formwork element
- Proven quality: Engineered in Germany for over 30 years



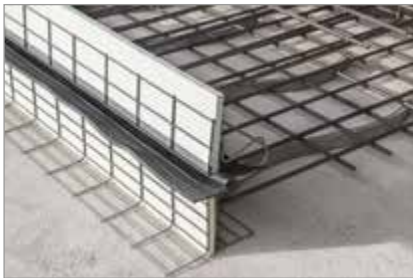
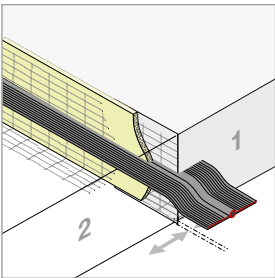
Stremaform® expansion joint formwork

The Stremaform® expansion joint formwork consists of carrier mats and a 20 mm thick expansion joint insert in between. This can optionally consist of Styrodur or fire-resistant mineral wool.



Stremaform® expansion joint formwork with carrying cage for rubber/PVC waterstop

- The Stremaform® formwork element with integrated carrying cage for rubber/PVC waterstop for the on-site mounting of a waterstop for expansion joint
- The Stremaform® fixer ensures that the middle hose of the waterstop for expansion joint is still exactly in the middle of the joint after concreting
- Carrying cage for rubber/PVC waterstop angled by 15° available for horizontal components
- With Styrodur 20 mm expansion joint insert and carrying cage for rubber/PVC waterstop 150/90-75 mm on one side, incl. expansion joint fixer



WG: 242

Length mm	Element width mm
2400	200-1500

Assembly variants for expansion joint formwork with carrying cage for rubber/PVC waterstop

WG: 242

Description
Supports on both sides
Sheet metal profile 60/20 mm single-sided
Sheet metal profile 110/20 mm single-sided
Carrying cage for rubber/PVC waterstop 180/90-75 mm on one side
Carrying cage for rubber/PVC waterstop angled upwards by 15°

Formwork elements for expansion joint formwork with carrying cage for rubber/PVC waterstop

WG: 242

Description
Corner unit
Cross element
T-unit/section
Unit for floor slab/wall transition

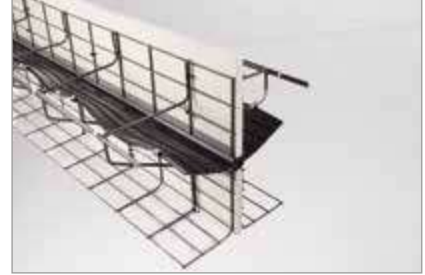
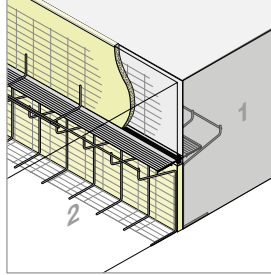
Joint insert

WG: 242

Material	Thickness mm	Element width mm
Styrodur	30	200-1500
Mineral wool	20	200-1500
Mineral wool	30	200-1500

Stremaform® expansion joint formwork with two-piece carrying cage for rubber/PVC waterstop

When installing large water stops we recommend the use of a two-piece version of the carrying cage for rubber/PVC waterstop. The PVC waterbar is rolled out onto the bottom part of the cage with the upper part being installed later. For horizontal structural elements, the carrying cage for rubber/PVC waterstop can be angled upwards by 15° on both sides to aid concrete placement.



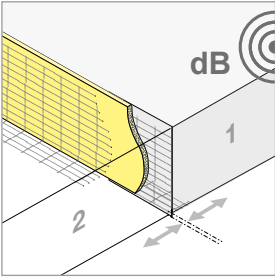
Stremaform® expansion joint formwork with integrated shear force transmission

All Stremaform® units for expansion joints can also be supplied with integrated shear force dowels. The different applications of the Egcodubel and Egcodorn dowels can be found from page 104 onwards.



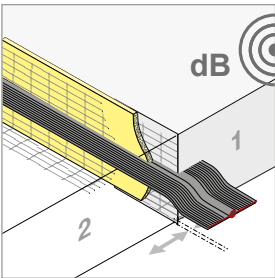
Stremaform® sound joint

The Stremaform® sound joint is used for the acoustic decoupling of concrete members. The ready-to-install formwork is installed in semi-detached and terraced houses for acoustic decoupling between the individual residential buildings.



Stremaform® sound joint with carrying cage for rubber/PVC waterstop

For the water-impermeable sector, the Stremaform® sound joint is additionally equipped with a carrying cage for rubber/PVC waterstop. The PVC waterbar is installed in-situ. With joint inlay, mineral wool 20 mm and carrying cage for rubber/PVC waterstop 150/60-45 mm, single-sided, incl. retaining clip.



WG: 242

Length mm	Element width mm
2400	200-1500

Surcharge for fixed lengths on request.

Assembly variants for sound joint formwork with carrying cage for rubber/PVC waterstop

WG: 242

Description
Supports on both sides
Carrying cage for rubber/PVC waterstop 180/60-45 mm on one side
Carrying cage for rubber/PVC waterstop angled upwards by 15°

Sound jointing formwork with carrying cage for rubber/PVC waterstop

WG: 242

Description
Corner unit
Cross element
T-unit/section
Unit for floor slab/wall transition

Joint insert

WG: 242

Material	Thickness mm	Element width mm
Mineral wool	40	200-1500



Tubbox® column former

Concrete columns can be produced in different geometries and surface qualities with Tubbox® column formers. They are a time-saving and cost-effective alternative to conventional column formwork. The disposable column formers are equipped with a ripcord for easier removal.

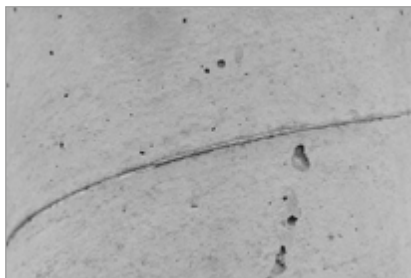
★ Advantages

- Fast set up and stripping accelerates construction
- Easy and handy for transport and installation
- Eliminates time and costs of cleaning and return transport
- Several columns can be produced in one concreting period
- Release agent is not necessary



Tubbox® round column formwork - spiral

Familiar concrete surface quality with normal blowhole pattern and slight impression of the spiral winding structure of the column former.



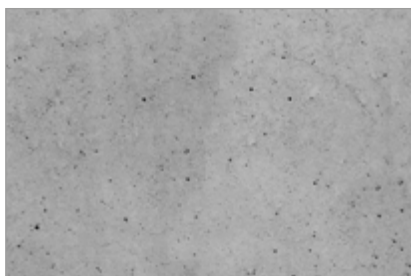
WG: 132

Item No.	Internal diameter	Concrete requirements	Weight
	mm	m³/m	kg/m
SRS150	150	0.019	1.45
SRS200	200	0.033	1.89
SRS240	240	0.048	2.20
SRS250	250	0.052	2.39
SRS300	300	0.074	2.67
SRS350	350	0.101	3.98
SRS400	400	0.132	4.67
SRS450	450	0.167	5.63
SRS500	500	0.206	6.87
SRS550	550	0.249	7.80
SRS600	600	0.297	9.34
SRS650	650	0.348	10.79
SRS700	700	0.404	12.11
SRS800	800	0.528	17.00
SRS1000	1000	0.825	23.44

Tubbox® column formers are characterized by a high resistance to the fresh concrete pressure. The necessary strength is achieved approx. 3 days after production. In order to reduce the risk of damage during transport or use, we recommend that you observe this deadline when planning your material. The maximum length is 6.0 m for a pipe diameter > 600 mm and 8.0 m for a pipe diameter ≤ 600 mm. If the maximum length is exceeded, the split version will be offered. The necessary mounting of the column formers must be done by the customer. A surcharge of 10% is applied for lengths over 6 metres. Price for lengths under 2 metres on request. Length tolerance ±25 mm.

Tubbox® round column formwork - smooth

Familiar concrete surface quality with occasional blowhole formation, but otherwise smooth concrete surface as an imprint of the plastic insert. With a column former diameter of more than 600 mm, two vertical joints of the column former insert are visible.



WG: 134

Item No.	Internal diameter	Concrete requirements	Weight
	mm	m³/m	kg/m
SRG150	150	0.019	1.71
SRG200	200	0.033	2.24
SRG240	240	0.048	2.62
SRG250	250	0.052	2.83
SRG300	300	0.074	3.19
SRG350	350	0.101	4.59
SRG400	400	0.132	5.37
SRG450	450	0.167	6.42
SRG500	500	0.206	7.74
SRG550	550	0.249	8.76
SRG600	600	0.297	10.39
SRG650	650	0.348	11.92
SRG700	700	0.404	13.33
SRG800	800	0.528	18.40
SRG1000	1000	0.825	25.19

Tubbox® column formers are characterized by a high resistance to the fresh concrete pressure. The necessary strength is achieved approx. 3 days after production. In order to reduce the risk of damage during transport or use, we recommend that you observe this deadline when planning your material. The maximum length is 6.0 m for a pipe diameter > 600 mm and 8.0 m for a pipe diameter ≤ 600 mm. If the maximum length is exceeded, the split version will be offered. The necessary mounting of the column formers must be done by the customer. A surcharge of 10% is applied for lengths over 6 metres. Price for lengths under 2 metres on request. Length tolerance ±25 mm.

Tubbox® round column formwork - blowhole-free

Highest surface hardness of the edge concrete layer, largely free of blowholes. For more precise information, see Zemdrain®. Overlap of Zemdrain® liner visible.



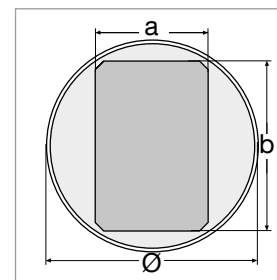
WG: 136

Item No.	Internal diameter	Concrete requirements	Weight
	mm	m³/m	kg/m
SRL150	150	0.019	1.61
SRL200	200	0.033	2.11
SRL240	240	0.048	2.46
SRL250	250	0.052	2.66
SRL300	300	0.074	2.99
SRL350	350	0.101	4.36
SRL400	400	0.126	5.10
SRL450	450	0.167	6.12
SRL500	500	0.206	7.41
SRL550	550	0.249	8.40
SRL600	600	0.297	9.99
SRL650	650	0.348	11.49
SRL700	700	0.404	12.87
SRL800	800	0.528	17.87
SRL1000	1000	0.825	24.52

Tubbox® column formers are characterized by a high resistance to the fresh concrete pressure. The necessary strength is achieved approx. 3 days after production. In order to reduce the risk of damage during transport or use, we recommend that you observe this deadline when planning your material. The maximum length is 6.0 m for a pipe diameter > 600 mm and 8.0 m for a pipe diameter ≤ 600 mm. If the maximum length is exceeded, the split version will be offered. The necessary mounting of the column formers must be done by the customer. A surcharge of 10% is applied for lengths over 6 metres. Price for lengths under 2 metres on request. Length tolerance ±25 mm.

Tubbox® rectangular column formwork

Tubbox® rectangular column formwork. High-quality concrete members can be created with the high-quality liner. Corners in a chamfered execution.



WG: 138

Description	Item No.	Dimensions a x b mm	Concrete requirements m³/m	Weight kg/m
Rectangular	SRR175240	175 x 240	0.044	5.39
	SRR200240	200 x 240	0.050	5.40
	SRR200250	200 x 250	0.053	6.74
	SRR200300	200 x 300	0.063	8.88
	SRR200350	200 x 350	0.074	8.94
	SRR200400	200 x 400	0.084	12.48
	SRR240300	240 x 300	0.076	8.85
	SRR240350	240 x 350	0.088	10.30
	SRR240360	240 x 360	0.091	10.30
	SRR240365	240 x 365	0.092	10.30
	SRR240400	240 x 400	0.101	10.32
	SRR240450	240 x 450	0.113	14.27
	SRR240500	240 x 500	0.126	16.53
	SRR250300	250 x 300	0.079	8.84
	SRR250350	250 x 350	0.092	10.28
	SRR250400	250 x 400	0.105	12.34
	SRR250500	250 x 500	0.131	16.48
	SRR300350	300 x 350	0.110	10.19
	SRR300400	300 x 400	0.126	12.20
	SRR300450	300 x 450	0.142	14.04
Square	SRR300500	300 x 500	0.158	16.24
	SRR350400	350 x 400	0.147	13.94
	SRR400500	400 x 500	0.210	18.58
	SRQ150150	150 x 150	0.024	3.68
	SRQ200200	200 x 200	0.042	5.08
	SRQ240240	240 x 240	0.060	6.82
	SRQ250250	250 x 250	0.066	7.34
	SRQ300300	300 x 300	0.095	9.00
	SRQ350350	350 x 350	0.129	12.15
	SRQ360360	360 x 360	0.136	12.12
	SRQ400400	400 x 400	0.168	13.80
	SRQ450450	450 x 450	0.213	18.53
	SRQ500500	500 x 500	0.263	21.00

Tubbox® formwork pipes are characterised by their high resistance to fresh concrete pressure.

The standard length is 2.0 m - 5.0 m.

The maximum standard length is 5.0 m.

If the maximum standard length is exceeded, an additional surcharge of 10% will be applied.

If the maximum standard length is exceeded, the split version will be offered. The necessary mounting of the column formers must be done by the customer.



Price for lengths under 2 metres on request. Length tolerance ± 25 mm.

Maximum possible dimensions 500 x 500 mm.

Tubbox® propping (without push-pull props)

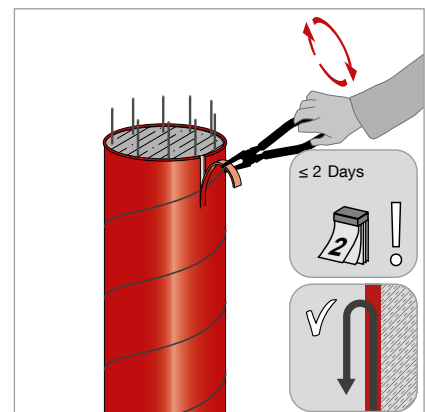
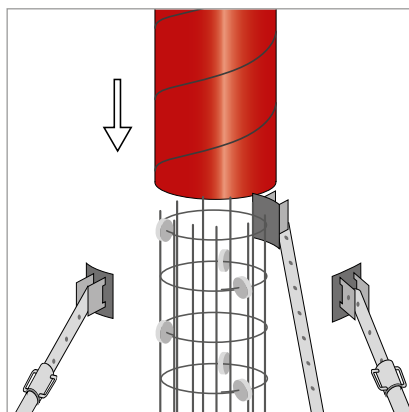
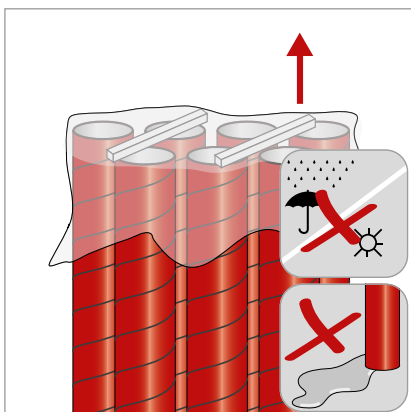
WG: 140

Suitable for the vertical erection of the column formers.

	Description	Item No.	Weight kg/pce
	Size I for column former Ø 200 - 600 mm, type fork, lashing strap with ratchet and 3 fork pieces	SRZS200	2.30
	Size II for column former Ø > 600 mm, type fork, lashing strap with ratchet and 3 fork pieces	SRZS600	2.50
	Additional fork bar piece for connecting a fourth push-pull prop	SRZSGST	0.43
	Size I for column former Ø 200 - 600 mm, type threaded rod, lashing strap with ratchet and 3 threaded steel pieces	SRZSGEW200	2.40
	Size II for column former Ø > 600 mm, type thread- ed rod, lashing strap with ratchet and 3 threaded steel pieces	SRZSGEW600	2.60
	Additional threaded bar piece for connecting a fourth push-pull prop	SRZSGEW	0.45

Application instructions for Tubbox® column formers

- Always support formwork over a large area during transport in order to avoid pressure points.
- Always store formwork vertically.
- Protect formwork against abrasive loads.
- Protect Tubbox® column formers against heat, rain and moisture – do not place in water.
- If accidental damage occurs, protect the damaged surface area against moisture by applying/sealing with adhesive tape.
- This formwork was manufactured, tested and prepared for dispatch in perfect condition following DIN 9001 guidelines. Transport damage or other faults must be recorded on the delivery documents at on receipt of goods. Our guarantee extends only to faults noted on the delivery documents immediately on arrival.
- Do not force column former over reinforcement which may be too large, or over spacers. Protruding spacers and rebars damage the formwork and make impressions on the concrete.





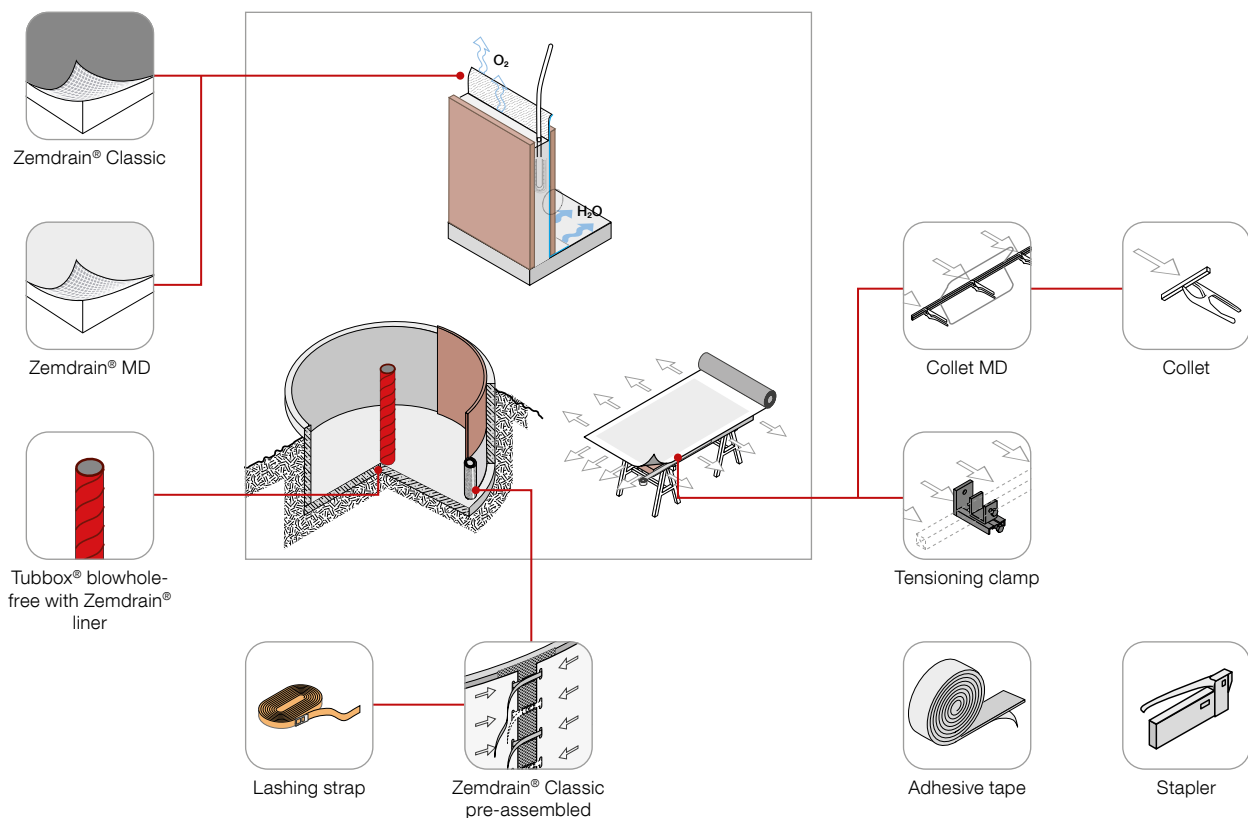
Zemdrain® CPF liner

The controlled permeability formwork (CPF) liner Zemdrain® drains the water from the concrete surface, achieving a harder, denser and more resistant surface finish. This significantly increases the service life of the concrete structure.

As well as delivering increased surface hardness, Zemdrain® CPF liner produces a blowhole free, low-porosity concrete finish. The improved surface ensures lower growth of microorganisms and algae as well as better freeze-deicing salt resistance, and at the same time increases abrasion resistance.

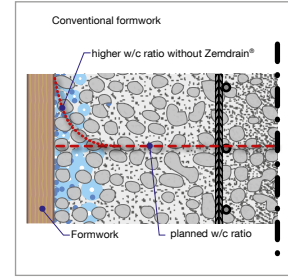
★ Advantages

- Increased service life of the concrete surface
- Value retention of the concrete surface
- Proven cost savings over the total service life of the structure
- Increased abrasion resistance
- Release agent is not necessary



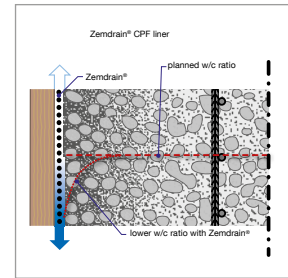
The challenge

Since the formwork is impermeable to water or only slightly absorbent, air and the excess water accumulate at the formwork due to the compaction process. Without Zemdrain, the result is an increase in the w/c ratio, increased pore formation, insufficient density (blowholes) and thus a concrete structure open to attack.



The solution

Controlled permeability formwork liner Zemdrain® drains the excess water from the concrete surface and causes the w/c ratio to be lowered to an almost optimal value. The concrete surface thus becomes harder, denser and therefore more resistant to attack.

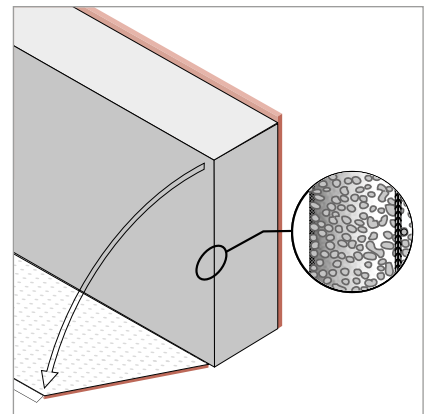
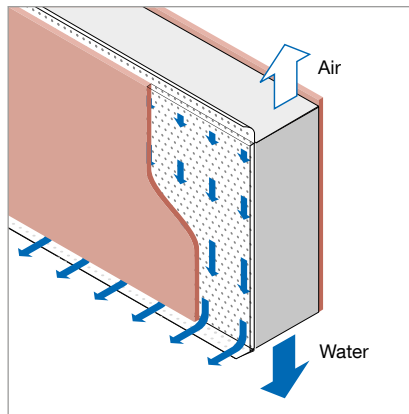
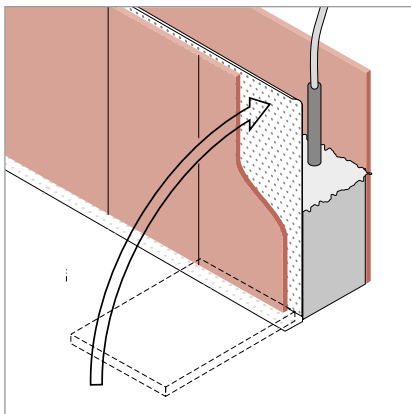


The result

With Zemdrain® as a CPF liner, the concrete obtains a higher surface hardness and an almost blowhole-free surface with low porosity. The improved surface ensures lower growth of microorganisms and algae as well as better freeze-deicing salt resistance, and at the same time increases abrasion resistance.



without Zemdrain® (left) vs. with Zemdrain® (right)



Zemdrain® is a registered trademark of DuPont.

Zemdrain® Classic

- Controlled permeability formwork liner
- Smooth to slightly structured, grey upper side (concrete side)
- Back (formwork side) black and diamond-shaped recesses
- For single use
- Approval for drinking water according to W270 and W347



WG: 96

Item No.	Width m	Length m	Area m²/roll	Weight kg/roll
ZEM1600	1.60	50.00	80.00	27.75
ZEM1900	1.90	50.00	95.00	33.00
ZEM2250	2.25	50.00	112.50	39.00
ZEM2600	2.60	50.00	130.00	45.00
ZEM2900	2.90	50.00	145.00	50.00
ZEM3200	3.20	50.00	160.00	55.00
ZEM4200	4.20	50.00	210.00	73.50

Width tolerance ± 20 mm

Zemdrain® MD

- Controlled permeability formwork liner
- Smooth to slightly structured white upper side (concrete side)
- Back (formwork side) with special drainage grid
- High cost-effectiveness due to possible multiple use (2 - 3 times) and simple, quick installation
- High storage capacity, therefore also suitable for inclined to horizontal surfaces



WG: 96

Item No.	Width m	Length m	Area m²/roll	Weight kg/roll
ZEMMD2	2.50	35.00	87.50	59.00

Width tolerance ± 10 mm

Zemdrain® Classic pre-assembled

- Zemdrain® Classic pre-assembled is a CPF liner for circular formwork made to measure for the inside of the round container. Pre-assembly facilitates fast covering of round container formwork.
- For single use



WG: 96

Description	Item No.
Conversion of the Zemdrain® CPF liner to suit the inner diameter and height of the round container	ZEMSONDER






Zemdrain® cut ware

WG: 96

Description	Item No.
Cutting of the complete rolls to reduce the roll length. Remnants are calculated and can be supplied on request. Cutting tolerance ± 50 mm. Minimum length 3 m.	ZEMSCHNITTQ
Cutting of the complete rolls to reduce the roll widths. Remnants are calculated and can be supplied on request. Cutting tolerance ± 20 mm.	ZEMSCHNITTL






Tools for processing Zemdrain®

WG: 95

	Description	Item No.	Packaging unit Pcs
	Collet, wide-area clamping and tensioning of Zemdrain® Classic over small formwork areas. Subsequent fastening with staples.	ZSZKAZ	1
	Collet MD 2.5 m, two-piece collet for Zemdrain® MD	ZSZMD2500	1
	Tensioning clamp for fixing of Zemdrain®. Also available for rental.	ZSL0810	1
	Adjustable stapler, manually operated, for fixing Zemdrain® Classic and MD to formwork surfaces. Uses 8 & 10 mm staples	ZTAKMD1	1
	Spare staples, stainless steel, Monel 053, 10 mm long	ZTEK10	1200

Zemdrain® components

WG: 95

	Description	Item No.	Length m	Width mm	Thickness mm	Packaging unit Pcs
	Special double-sided adhesive tape for the rear-sided fixing and sealing of overlaps of Zemdrain® Classic, not suitable for drinking water tank applications	ZDSSKB	50.00	50	0.5	24
	MD fixing tape, double-sided adhesive tape, white, for fixing and sealing Zemdrain® MD to the formwork, not suitable for use in drinking water tank applications	ZBBAND	10.00	50	1.0	20
	Zemdrain® covering tape, laminated self-adhesive tape for covering formwork joints and stapled Zemdrain joints, for repairing possibly damaged Zemdrain surfaces or for the edge coverage of lined formwork sections, not suitable for use in drinking water supply systems	ZABAND	10.00	50	0.5	30
	Zemdrain® covering tape for formwork joints, fastening with stapler clamps, not self-adhesive	ZEBAND	30.00	50	-	24
	Foam rubber water bar, for sealing formwork element joints, not suitable for use in drinking water tank applications	FKBANDS	10.00	19	6	15

Spacers

Formwork technologies

Reinforcement technologies

Sealing technologies

Building acoustics



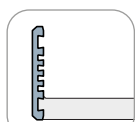
Balcony and ceiling edge formwork

The balcony and ceiling edge formworks are an ideal alternative to conventional timber formwork. The formwork elements remain in the concrete as permanent formwork and produce a clean finish of the concrete components.

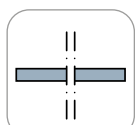
★ Advantages

- Easy assembly
- No elaborate stripping work
- Saves time and costs

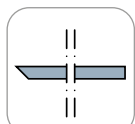
Upstand standard (AKF)



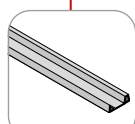
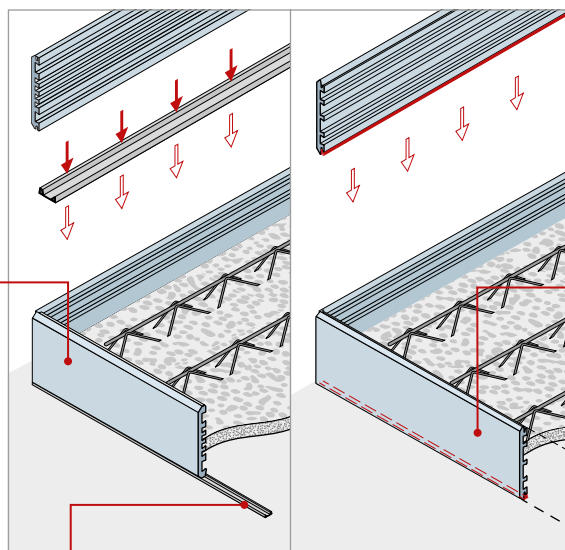
Standard unit



90° edges on both sides

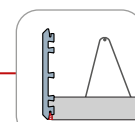


45° edge on one side

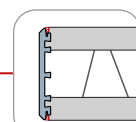


Drip profile made of plastic

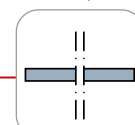
Upstand with sealing strip (AKZ)



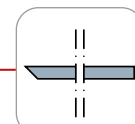
Type "Slab" with one-sided sealing strip



Type "Wall" with double-sided sealing strip



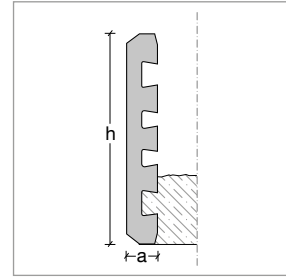
90° edges on both sides



45° edge on one side

Standard upstand unit

- With flat support
- Recommended for formwork of slab openings, stair exits and various recesses in the interior area
- With additional drip profile made of plastic, suitable for balcony formwork with drip former in the outdoor area



WG: 62


Item No.	Dimensions h x a mm	Length m	Weight kg/m	Pallet content Pcs	Weight kg/pallet
AKF1602000	160 x 25	2.00	6.50	100	1320
AKF1602700	160 x 25	2.70	6.48	56	1000
AKF1802000	180 x 25	2.00	7.00	100	1420
AKF1802700	180 x 25	2.70	7.04	56	1084
AKF2002000	200 x 25	2.00	8.00	100	1620
AKF2002700	200 x 25	2.70	7.78	56	1196
AKF2202000	220 x 25	2.00	8.50	80	1380
AKF2202700	220 x 25	2.70	8.52	56	1308
AKF2402000	240 x 25	2.00	9.50	80	1540
AKF2402700	240 x 25	2.70	9.52	56	1459
AKF2502000	250 x 25	2.00	10.00	80	1620
AKF2502700	250 x 25	2.70	10.00	56	1532
AKF3002000	300 x 25	2.00	12.00	60	1460
AKF3002700	300 x 25	2.70	12.22	28	944

One-sided mitre cut 45° on request.

Acceptance only in complete packaging unit (pallet content)

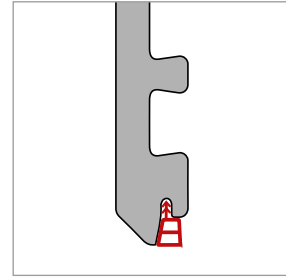
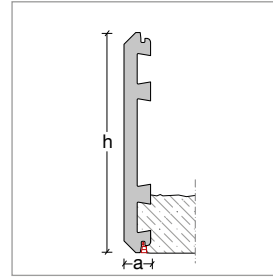
Drip profile made of plastic for upstands

WG: 62

	Item No.	Dimensions a x b x c mm	Length m	Packaging unit Pcs
	AKFAP2500	10 x 31 x 10	2.50	16

Upright pre-mounted with a sealing strip

- Compensation of small deviations of the formwork surface
- Straight, sharp-edged finish
- Equipped as standard with a sealing strip. Available with two sealing strips on request



WG: 62

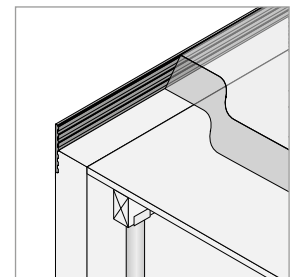
Item No.	Dimensions h x a mm	Length m	Weight kg/m	Pallet content Pcs	Weight kg/pallet
AKZ1602000D	160 x 25	2.00	5.69	100	1157
AKZ1602700D	160 x 25	2.70	5.68	50	787
AKZ1802000D	180 x 25	2.00	6.19	100	1257
AKZ1802700D	180 x 25	2.70	6.19	50	855
AKZ2002000D	200 x 25	2.00	6.69	100	1358
AKZ2002700D	200 x 25	2.70	6.70	50	925
AKZ2202000D	220 x 25	2.00	7.16	80	1166
AKZ2202700D	220 x 25	2.70	7.16	50	987
AKZ2402000D	240 x 25	2.00	7.65	80	1244
AKZ2402700D	240 x 25	2.70	7.67	50	1055
AKZ2502000D	250 x 25	2.00	7.95	80	1292
AKZ2502700D	250 x 25	2.70	7.95	50	1094
AKZ2802000D	280 x 25	2.00	10.46	60	1275
AKZ2802700D	280 x 25	2.70	10.46	25	726
AKZ3002000D	300 x 25	2.00	9.18	60	1121
AKZ3002700D	300 x 25	2.70	9.18	25	640
AKZ3502000D	350 x 25	2.00	13.15	40	1072
AKZ3502700D	350 x 25	2.70	13.15	25	908
AKZ3602700D	360 x 25	2.70	13.32	25	919
AKZ4002700D	400 x 25	2.70	14.75	25	1015

One-sided mitre cut 45° on request.

Acceptance only in complete packaging unit (pallet content)

Fibre concrete shutter panel

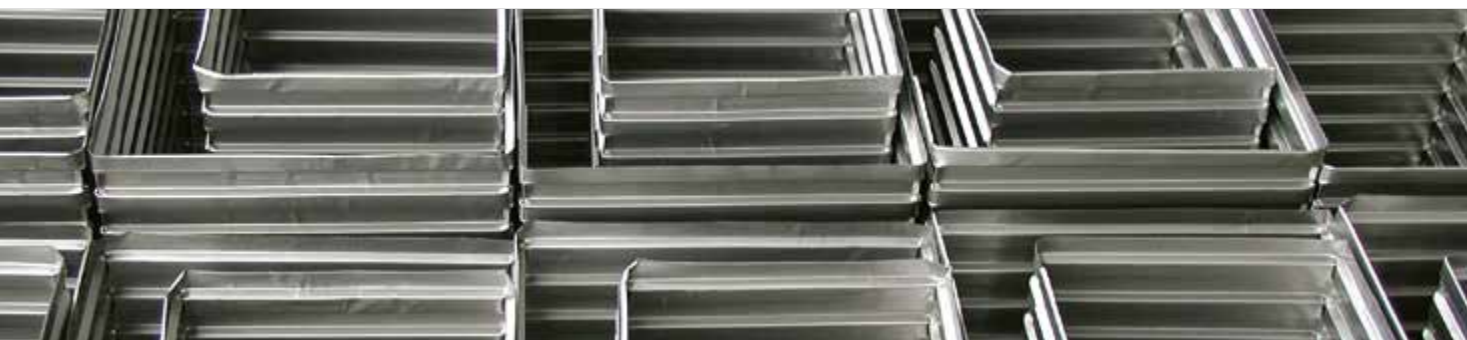
- As slab edge formwork in concrete construction and for covering formwork joints
- Time-saving: no formwork erection
- No leakage of the liquid concrete in the event of unclean formwork joints
- Ideal bond with cast-in-situ concrete
- Dimensionally stable
- Cutting on request



WG: 64

Item No.	Dimensions h x a mm	Length m	For slab thickness mm	Weight kg/m	Pallet content Pcs	Weight kg/pallet
FBSB2501200	250 x 20	1.20	180	9.60	100	1172
FBSB3001200	300 x 20	1.20	200	10.00	100	1220
FBSB3501200	350 x 23	1.20	250	14.00	80	1364

Further dimensions available on request. Not suitable for use in exposed concrete surfaces, or usable only after prior clarification.

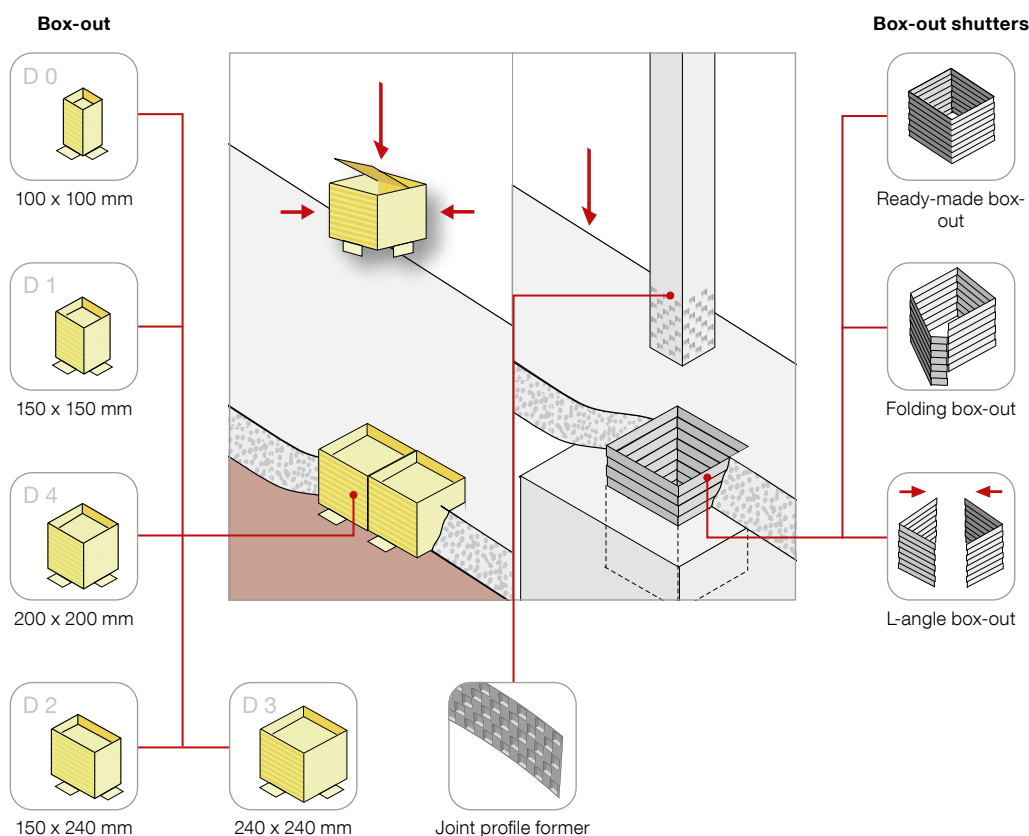


Box-out shutters and recess formers

Recesses made of metal or cardboard provide the right formwork element for every recess.

Advantages

- Elaborate stripping work omitted
- Easy to handle on the building site
- You save costs and time compared to conventional timber formwork



Folding box-out, pre-mounted - art. no. KSMONT

- The box-out shutter profile meets the requirements of EN 1992-1-1 for the highest category "indented"
- From a dimension of 0.20 m x 0.20 m
- Also available with extra support
- Also available in rectangular shape



Folding box-out, unassembled incl. self-tapping screws - art. no. KSUMON

- The box-out shutter profile meets the requirements of EN 1992-1-1 for the highest category "indented"
- No freight and storage problems
- Simple building site transport
- Easy and quick assembly with the self-tapping screws included
- Folding dimension pre-defined, fold sheet metal to the stop
- Also available in rectangular shape



Self-tapping screws

WG: 194

Item No.	Packaging unit
	Pcs
SBKBSS	50

L-angle box-out - art. no. KSLWINKEL

- The box-out shutter profile meets the requirements of EN 1992-1-1 for the highest category "indented"
- Very large dimensions possible
- Delivered unassembled in two separate L-angles
- Simple and fast installation by plugging together without any further fastening material
- Inexpensive transport and storage options
- A range of system heights to suit slab depths from 500 mm to 2500 mm available
- Also available in rectangular shape



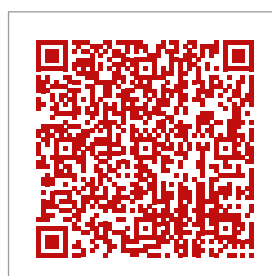
Anchor hole drilling

WG: 86

Description	Item No.
2 drill holes per box-out	SBKAL

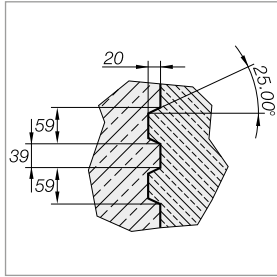
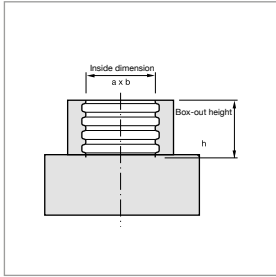
Folding box-outs pre-mounted, unassembled and L-angle box-outs

For further article and price information on folding box-outs pre-mounted, unassembled and L-angle box outs, please refer to the MAX FRANK online catalogue.



Please consider for all types of sleeve foundation:

- All dimensions are internal dimensions (always specify internal dimensions when ordering)
- Stable trapezoidal sheet metal, therefore often no stiffening necessary
- Profile depth 20 mm - take into account in the reinforcement layout
- Manufacturing tolerance: ± 20 mm
- Box-out height in increments of 50 mm



Stiffening

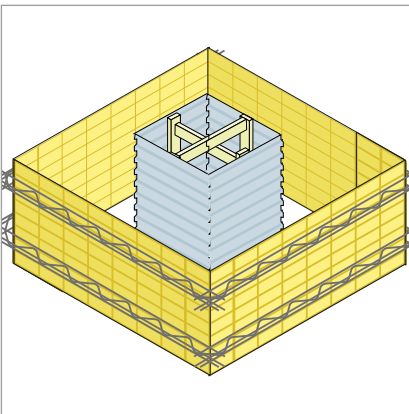
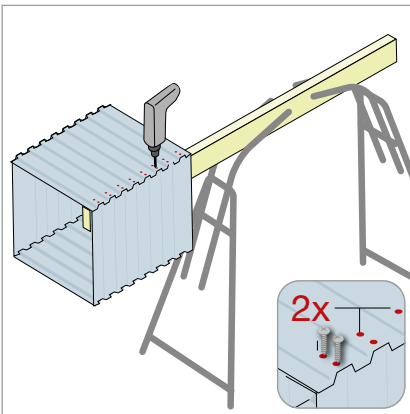
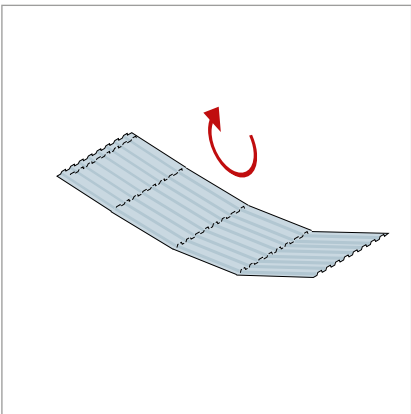
The box-out shutters are made of stable trapezoidal sheet metal. Stiffening can therefore often be dispensed with. However, if recesses with particularly large dimensions should be required, it is recommended to additionally stiffen the box-out shutters. The stiffening of the pre-mounted box-out shutters and the attachment of a base is possible in the factory, so that the shutters can be delivered fully assembled to the building site.



Box-out width m	Box-out height																	
	m																	
	0,30	0,40	0,50	0,60	0,70	0,80	0,90	1,00	1,10	1,20	1,30	1,40	1,50	1,60	1,70	1,80	1,90	
0,45/0,45																		
0,50/0,50																		
0,55/0,55																		
0,60/0,60																		
0,65/0,65																		
0,70/0,70																		
0,75/0,75																		
0,80/0,80																		
0,85/0,85																		
0,90/0,90																		
0,95/0,95																		
1,00/1,00																		

Table values are considered to be guiding values, depending on the building site conditions and the concrete pouring speed

☐ Box-out, self-supporting
 ☐ Stiffening necessary



Box-out for slab box-outs

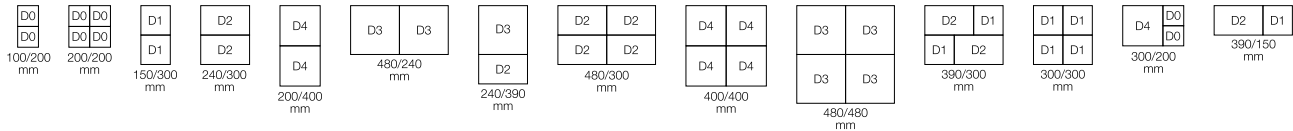
- High-quality coated cardboard, punched and perforated in a plate
- Stable due to inner stiffening ring
- Spill-proof due to void creation
- Easy stripping by pulling out the handle-like lid flap
- For larger recesses, we recommend our box-out shutters made of sheet steel
- Enlargement of the recess by combining several box-outs



WG: 108

Item No.	Type	Length mm	Width mm	Height mm	Packaging unit Pcs	Weight kg/packaging unit	Pallet content Packaging unit	Weight kg/pallet
SBOXD0	D 0	100	100	240	50	9.00	20	200
SBOXD1	D 1	150	150	240	50	16.00	15	260
SBOXD2	D 2	150	240	240	50	19.00	15	305
SBOXD3	D 3	240	240	240	50	26.00	10	280
SBOXD4	D 4	200	200	240	50	21.00	10	230

Combination possibilities



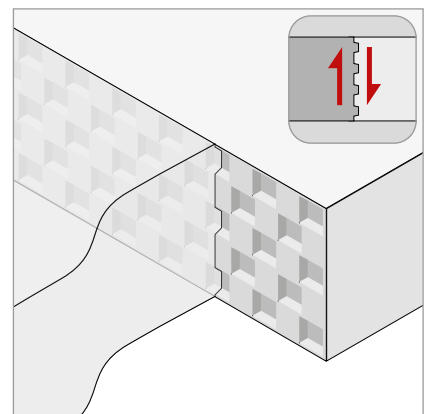
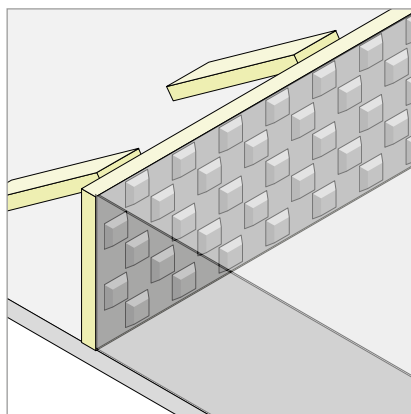
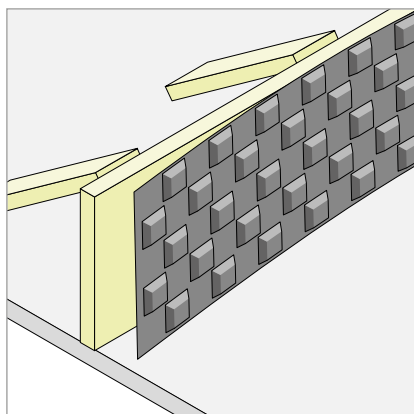
Joint profile former

- Made of moulded plastic
- Gives the concrete the optimal structure for the transmission of shear forces
- Replaces trapezoidal strips
- Cutting possible on the building site
- Fulfills the requirements of the highest category "indented" according to EN 1992-1-1, assuming a 90 % indented joint



WG: 118

Description	Item No.	Length m	Width m	Profile height mm
Joint profile former with perforation for simpler adaptation	FFP12083	1.22	0.79	12
Joint profile former without perforation, multiple use possible	FFPO12083	1.22	0.79	12





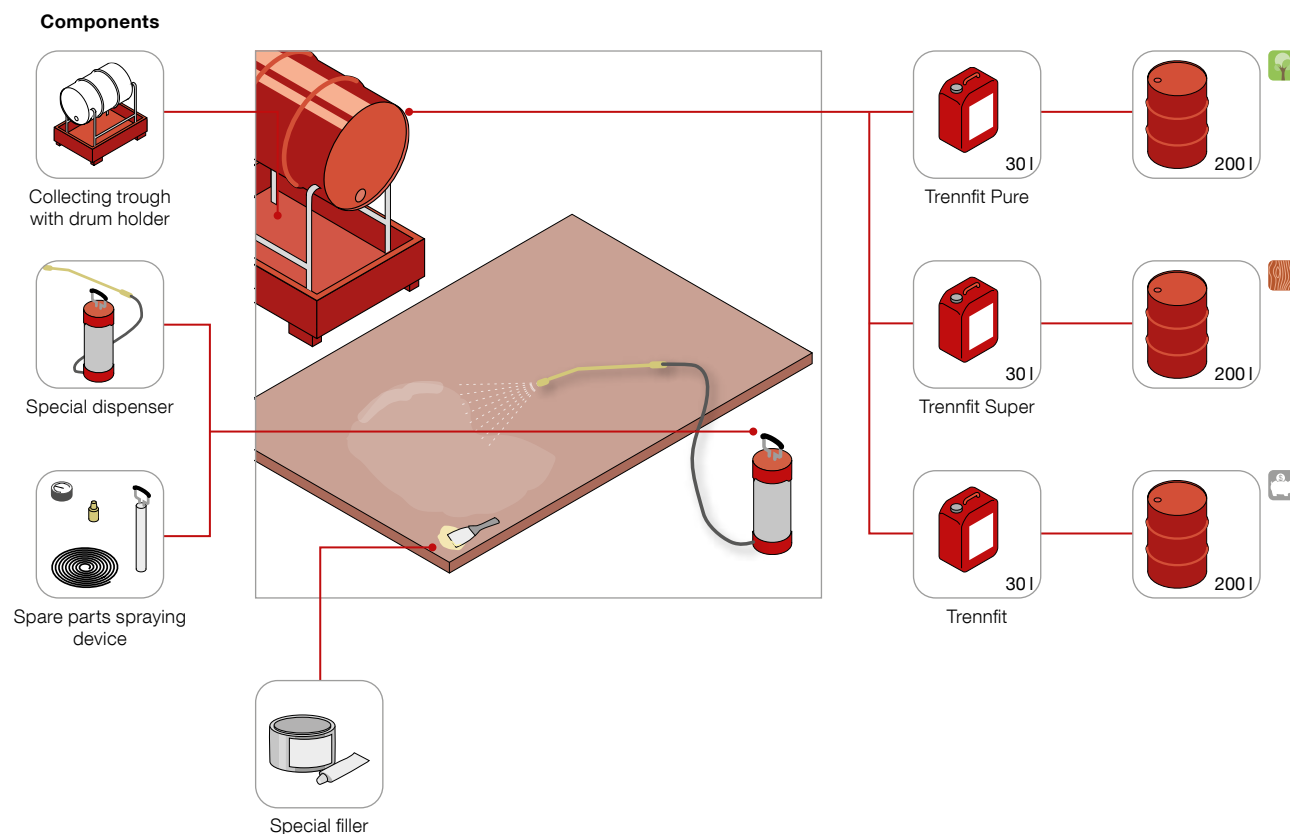
Trennfit release agent

Trennfit brand release agents offer the right product for all formwork types and areas of application. An excellent release effect is guaranteed. Trennfit affects neither the subsequent render, glue and paint adhesion, nor the concrete hardening. It leaves no residues on the concrete surface and does not lead to the abrasion of the concrete surface.

All Trennfit release agents are available in 30 l canisters or 200 l drums.

Advantages

- Ready for use
- Increased lifespan of your formwork
- Reduced labour costs for formwork preparation and cleaning
- No abrasion of the concrete surface



Trennfit Pure

- The quickly bio-degradable concrete release agent
- Free from mineral oil
- From 100% regenerative raw materials
- Good release effect
- Not subject to labelling according to Hazardous Substances Ordinance and EU directives
- No impairment of the adhesion of render, glue and paint



WG: 88

Item No.	Contents l/pce.	Pallet content Pcs
TPK030	30	27
TPF200	200	4

Application area:

- For all concrete constructions
- Check application with exposed concrete
- Suitable for absorbent and non-absorbent formwork surfaces

Trennfit Super

- The physico-chemical release agent for highest demands
- No staining
- Very good render adhesion
- Processable up to temperatures of 15 °C
- Excellent rust protection properties, therefore well suited for machine maintenance



WG: 88

Item No.	Contents l/pce.	Pallet content Pcs
TSK030	30	24
TSF200	200	4

Application area:

- For all concrete constructions
- For exposed and white concrete
- For concrete surface coatings
- For rendering and stucco work
- For the manufacture of precast elements in heated and unheated formwork
- For the conservation of steel formwork and construction equipment

Trennfit

- The cost-effective release agent for all conventional types of concrete
- Good release effect
- Easy stripping
- Good render adhesion



WG: 88

Item No.	Contents l/pce.	Pallet content Pcs
TNK030	30	24
TNF200	200	4

Application area:

- For all concrete constructions except for exposed and white concrete

Safety and environmental protection for Trennfit concrete release agents

- Frost resistant
- Not classified as dangerous goods according to ADR/ RID, ADN/ADNR, IMDG, ICAO-TI/IATA-DGR
- Water hazard class 1 – i.e. slightly hazardous to water
- Flash point > 100 °C
- GHS CODE (Hazardous Materials Information System Code): Trennfit Pure BTM10, Trennfit Super BTM 20, Trennfit BTM 20
- Waste code: Trennfit Pure - 130207, Trennfit Super - 130205, Trennfit - 130205, empty steel and plastic containers - 150110

Yield per litre of Trennfit concrete release agent when using the special dispenser:

Formwork type	Trennfit Pure	Trennfit Super	Trennfit
Steel moulds	60 – 70 m ²	80 – 100 m ²	60 – 70 m ²
Concrete mould smoothed	5 – 15 m ²	10 – 20 m ²	5 – 15 m ²
Planed wood	25 – 35 m ²	30 – 40 m ²	25 – 35 m ²
coated formwork panels	50 – 60 m ²	70 – 90 m ²	50 – 60 m ²
rough wood	20 – 30 m ²	20 – 30 m ²	15 – 25 m ²

Special dispenser

Specially designed and manufactured for the application of concrete release agents. Special nozzle for particularly fine spray mist. More than double the yield compared to normal spraying devices.



WG: 92

Description	Item No.
Special dispenser made of stainless steel, contents 5 l, spraying hose 1.4 m, spraying tube 0.5 m	TSPRUEH

Spare parts for special dispenser


WG: 94

Description	Item No.
Nozzle with screw fitting for type 506	TSP02
Spraying tube including nozzle with screw fitting	TSP03
Injection hose with quick-closing valve, complete	TSP09
Pump, complete	TSP16
Seals, complete set	TSP17

Accessories for Trennfit drums


WG: 186

- The special pump allows clean work on the building site
- The collecting trough prevents soil and groundwater contamination and facilitates the decanting of the release agent into the spraying device

	Description	Item No.
	Special pump suitable for 200 l drum	TPUMPE
	Collecting trough with drum holder, TÜV-tested, collecting volume > 200 l	TAWANNE
	Tap for Trennfit drum	TFHAEN

Special filler incl. hardener

WG: 90

	Item No.	Colour	Packaging unit Pcs	Weight kg/pce
	TSPACHG	grey	12	1.00

Application area:

- For repairing and filling damaged formwork boards and panels
- For smoothing concrete surfaces
- For grouting with crack injection
- As adhesive for connecting concrete, stones, slabs, etc.





Formwork accessories

The extensive range of tie bars, threaded steel accessories and formwork profiles provides many practical aids for the building site.

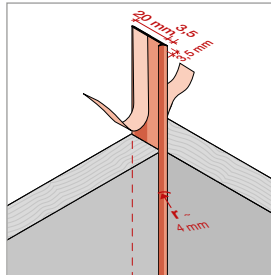
Plastic profiles

WG: 162

	Description	Item No.	Dimensions a x b x c mm	Length m	Packaging unit Pcs	Pallet content m	Weight kg/pallet
	Dreika - triangular profile	KDR10	10 x 10 x 15	2.50	40	10000	620
		KDR15	15 x 15 x 21	2.50	40	10000	720
		KDR20	20 x 20 x 28	2.50	40	10000	1020
		KDR25	25 x 25 x 35	2.50	40	4900	706
	Trapezoidal profile strip 10/20	KTP201010	20 x 10 x 10	2.50	40	2000	300

Round edge

- Achieves a slightly rounded edge
- Geometry complies with the Accident Prevention Regulations "Schools" GUV-VS1
- Additional sealing of the formwork joint due to the soft rubber
- Self-adhesive for precise and fast assembly



WG: 162

Description	Item No.	Dimensions a x b x c mm	Length m	Packaging unit Pcs
Exposed concrete corner strip, self-adhesive for slightly rounded edges (r = 4 mm)	KSBLEISTESK	20 x 3,5 x 3,5	20.00	6



Accessories for threaded steel

WG: 102

	Description	Item No.	applicable load capacity kN	Packaging unit Pcs	Weight kg/pce
	Waterstop, 120 x 120 x 2 mm, welded onto tie bar, diameter 15 mm, type B	GEWWSB15	-	-	-
	Hexagonal nut, weldable for tie bar Ø 15 mm, size 30 AF, length 30 mm or 50 mm	GEWSKM30 GEWSKM50	50 90	50 50	0.130 0.220
	Connecting sleeve, weldable, hexagonal with stop pin for tie bar Ø 15 mm, size 30 AF, length 105 mm	GEWVMUF	90	50	0.460
	Cast-iron waterstop for tie bar Ø 15 mm, dimensions length 110 mm, Ø 65 mm	MWSG22	90	50	0.590
	Coupler (plastic) for cast-iron waterstop	MKUW22	-	250	0.010
	Steel/plastic cone for tie bar Ø 15 mm, overall length 100 mm, installation length 50 mm	GEWSKO15	90	50	0.450
	butted, to fit steel/plastic cone GEWSKO15	FBVKSCK	-	100	0.190
	Waved anchor - tie bar Ø 15 mm, type B, length 550 mm	GEWWANK	90	-	0.850
	Loop anchor - tie bar Ø 15 mm, type B, dimensions length 550 mm	GEWSANK	90	-	1.960
	Rock anchor (expansion dowel) for tie bar Ø 15 mm, drill hole 35 - 37 mm	GEWFANK	-	50	0.360
	Fixing anchor for tie bar Ø 15 mm, dimensions of plate 100 x 70 mm, concrete casting depth 95 mm	GEWFIXA	-	50	0.450
	Wrench DW 15 for unscrewing tight tie bars Ø 15 mm	GEWSCHL	-	-	1.120
	Formwork sleeve, red, incl. nail plug for tie bar Ø 15 mm, concrete casting depth 70 mm	GEWASH	16 with C20/25	100	0.060

Accessories for threaded steel

WG: 102

	Description	Item No.	applicable load capacity kN	Packaging unit Pcs	Weight kg/pce
	Formwork sleeve D-15, grey (glass-fibre reinforced), incl. nail plug for tie bar Ø 15 mm, concrete casting depth 105 mm	GEWASHVB	23 with C20/25	100	0.040
	Sealing stopper for formwork sleeve to fit grey formwork sleeve GEWASHVB	GEWASHVST	-	100	0.018

Spacers

Formwork technologies

Reinforcement technologies

Sealing technologies

Building acoustics



MAX FRANK

**BUILDING
COMMON GROUND**



MAX FRANK Group

Headquarters:

Max Frank GmbH & Co. KG

Mitterweg 1

94339 Leiblfing

Germany

www.maxfrank.com

